

Anti-REEP3 Antibody Picoband®

Catalog Number: A12243-1

About REEP3

Predicted to enable microtubule binding activity. Involved in mitotic nuclear membrane reassembly. Predicted to be integral component of membrane. Predicted to be active in cytoplasmic microtubule; endoplasmic reticulum membrane; and endoplasmic reticulum tubular network.

Overview

Product Name	Anti-REEP3 Antibody Picoband®
Reactive Species	Human, Mouse, Rat
Description	Boster Bio Anti-REEP3 Antibody Picoband® catalog # A12243-1. Tested in IF, ICC, WB applications. This antibody reacts with Human, Mouse, Rat. The brand Picoband indicates this is a premium antibody that guarantees superior quality, high affinity, and strong signals with minimal background in Western blot applications. Only our best-performing antibodies are designated as Picoband, ensuring unmatched performance.
Application	IF, ICC, WB
Clonality	Polyclonal
Formulation	Each vial contains 4 mg Trehalose, 0.9 mg NaCl, 0.2 mg Na ₂ HPO ₄ .
Storage Instructions	At -20°C for one year from date of receipt. After reconstitution, at 4°C for one month. It can also be aliquotted and stored frozen at -20°C for six months. Avoid repeated freezing and thawing.
Host	Rabbit
Uniprot ID	Q6NUK4

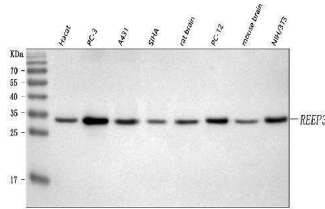
Technical Details

Immunogen	A synthetic peptide corresponding to a sequence at the C-terminus of human REEP3, identical to the related mouse sequences.
Recommended Detection Systems	Boster recommends Enhanced Chemiluminescent Kit with anti-Rabbit IgG (EK1002) for Western blot, and HRP Conjugated anti-Rabbit IgG Super Vision Assay Kit (SV0002-1) for ICC.
Cross Reactivity	No cross-reactivity with other proteins.
Isotype	Rabbit IgG
Form	Lyophilized
Concentration	Adding 0.2 ml of distilled water will yield a concentration of 500 µg/ml.
Purification	Immunogen affinity purified.

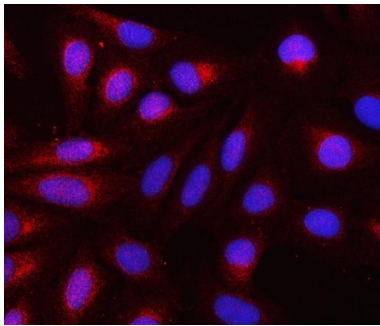
Suggested Dilutions

Western blot, 0.25-0.5 $\mu\text{g/ml}$, Human, Mouse, Rat
Immunocytochemistry/Immunofluorescence, 5 $\mu\text{g/ml}$, Human

Anti-REEP3 Antibody Picoband® (A12243-1) Images



Western blot analysis of REEP3 using anti-REEP3 antibody (A12243-1). Electrophoresis was performed on a 5-20% SDS-PAGE gel at 70V (Stacking gel) / 90V (Resolving gel) for 2-3 hours. The sample well of each lane was loaded with 30 ug of sample under reducing conditions. Lane 1: human Hacat whole cell lysates, Lane 2: human PC-3 whole cell lysates, Lane 3: human A431 whole cell lysates, Lane 4: human SIHA whole cell lysates, Lane 5: rat brain tissue lysates, Lane 6: rat PC-12 whole cell lysates, Lane 7: mouse brain tissue lysates, Lane 8: mouse NIH/3T3 whole cell lysates. After electrophoresis, proteins were transferred to a nitrocellulose membrane at 150 mA for 50-90 minutes. Blocked the membrane with 5% non-fat milk/TBS for 1.5 hour at RT. The membrane was incubated with rabbit anti-REEP3 antigen affinity purified polyclonal antibody (Catalog # A12243-1) at 0.5 ug/mL overnight at 4°C, then washed with TBS-0.1%Tween 3 times with 5 minutes each and probed with a goat anti-rabbit IgG-HRP secondary antibody at a dilution of 1:5000 for 1.5 hour at RT. The signal is developed using an Enhanced Chemiluminescent detection (ECL) kit (Catalog # EK1002) with Tanon 5200 system. A specific band was detected for REEP3 at approximately 34 kDa. The expected band size for REEP3 is at 29 kDa.



IF analysis of REEP3 using anti-REEP3 antibody (A12243-1). REEP3 was detected in an immunocytochemical section of U2OS cells. Enzyme antigen retrieval was performed using IHC enzyme antigen retrieval reagent (AR0022) for 15 mins. The cells were blocked with 10% goat serum. And then incubated with 5 ug/mL rabbit anti-REEP3 Antibody (A12243-1) overnight at 4°C. Cy3 Conjugated Goat Anti-Rabbit IgG (BA1032) was used as secondary antibody at 1:500 dilution and incubated for 30 minutes at 37°C. The section was counterstained with DAPI. Visualize using a fluorescence microscope and filter sets appropriate for the label used.

Submit a product review to [Biocompare.com](https://www.biocompare.com)

Submit a review of this product to [Biocompare.com](https://www.biocompare.com) to receive a \$20 Amazon.com giftcard! Your reviews help your fellow scientists make the right decisions. Thank you for your contribution.



Anti-REEP3 Antibody

For Research Use Only. Not for use in diagnostic procedures.