

Anti-AP-3 complex subunit sigma-1 AP3S1 Antibody

Catalog Number: A12249

About AP3S1

AP3S1 belongs to the adaptor complexes 3 (AP3) small subunit family which is not clathrin-associated. The complex is associated with the Golgi region as well as more peripheral structures. It facilitates the budding of vesicles from the Golgi membrane and may be directly involved in trafficking to lysosomes. AP3 is a heterotetramer composed of two large adaptins (AP3D1, AP3B1 or AP3B2), a medium adaptin (AP3M1 or AP3M2) and a small adaptin (APS1 or AP3S2). AP3S1 Interacts with AGAP1 and may play an important role in carcinoma.

Overview

Product Name	Anti-AP-3 complex subunit sigma-1 AP3S1 Antibody
Reactive Species	Human, Mouse, Rat
Description	Boster Bio Anti-AP-3 complex subunit sigma-1 AP3S1 Antibody (Catalog # A12249). Tested in ELISA, WB, IHC-P, IF applications. This antibody reacts with Human, Mouse, Rat.
Application	ELISA, IF, IHC-P, WB
Clonality	Polyclonal
Formulation	AP3S1 Antibody is supplied in PBS containing 0.02% sodium azide.
Storage Instructions	AP3S1 antibody can be stored at 4°C for three months and -20°C, stable for up to one year. Avoid repeated freeze-thaw cycles. Antibodies should not be exposed to prolonged high temperatures.
Host	Rabbit
Uniprot ID	Q92572

Technical Details

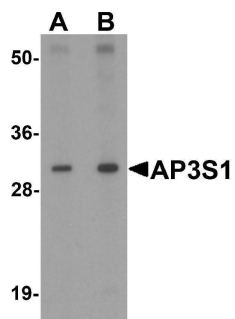
Immunogen	AP3S1 antibody was raised against a 19 amino acid synthetic peptide near the center of human AP3S1. The immunogen is located within the first 50 amino acids of AP3S1.
Predicted Reactive Species	Bovine
Cross Reactivity	At least three isoforms of AP3S1 are known to exist; this antibody will detect the two larger isoforms. AP3S1 antibody is predicted to not cross-react with other AP3 protein family members.
Isotype	IgG
Form	Liquid
Concentration	1 mg/mL
Purification	AP3S1 Antibody is affinity chromatography purified via peptide column.

Suggested Dilutions

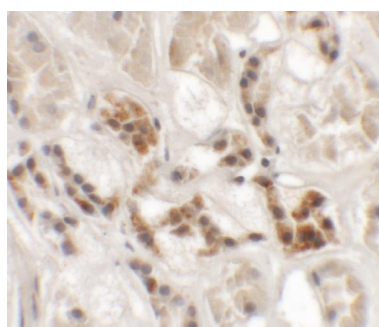
AP3S1 antibody can be used for detection of AP3S1 by Western blot at 1 - 2 ug/mL. Antibody can also be used for immunohistochemistry starting at 2.5 ug/mL. For immunofluorescence start at 20 ug/mL.

Antibody validated: Western Blot in mouse samples; Immunohistochemistry in human samples and Immunofluorescence in human samples. All other applications and species not yet tested. Optimal dilutions for each application should be determined by the researcher.

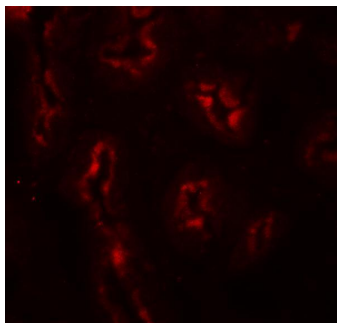
Anti-AP-3 complex subunit sigma-1 AP3S1 Antibody (A12249) Images



Western blot analysis of AP3S1 in mouse kidney tissue lysate with AP3S1 antibody at (A) 1 and (B) 2 ug/mL .



Immunohistochemistry of AP3S1 in human kidney tissue with AP3S1 antibody at 2.5 ug/mL.



Immunofluorescence of AP3S1 in human kidney tissue with AP3S1 antibody at 20 ug/mL.

Submit a product review to [Biocompare.com](https://www.biocompare.com)

Submit a review of this product to [Biocompare.com](https://www.biocompare.com) to receive a \$20 Amazon.com giftcard! Your reviews help your fellow scientists make the right decisions. Thank you for your contribution.



Anti-AP-3 complex subunit sigma-1 AP3S1 Antibody

For Research Use Only. Not for use in diagnostic procedures.