

Anti-MLIP Antibody

Catalog Number: A12261

About MLIP

The muscle-enriched A-type lamin-interacting protein (MLIP) is ubiquitously expressed, although most predominantly in heart, skeletal and smooth muscle, and interacts directly and co-localizes with lamin A and C in the nuclear envelope. MLIP also co-localizes with promyelocytic leukemia (PML) bodies within the nucleus. Decreasing lamin A/C expression with siRNA results in the upregulation and mislocalization of MLIP, suggesting that MLIP localization to the nuclear envelope is dependent on the lamin proteins. It has been suggested that MLIP may function as a tethering protein linking LMNA to factors within the nuclear envelope of within PML bodies

Overview

Product Name	Anti-MLIP Antibody
Reactive Species	Human
Description	Boster Bio Anti-MLIP Antibody (Catalog # A12261). Tested in ELISA, WB, IHC-P, IF applications. This antibody reacts with Human.
Application	ELISA, IF, IHC-P, WB
Clonality	Polyclonal
Formulation	MLIP Antibody is supplied in PBS containing 0.02% sodium azide.
Storage Instructions	Antibody can be stored at 4°C up to one year. Antibodies should not be exposed to prolonged high temperatures.
Host	Rabbit
Uniprot ID	Q5VWP3

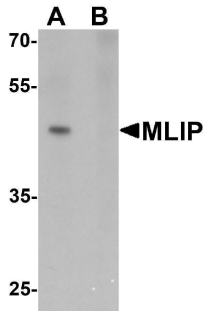
Technical Details

Immunogen	MLIP antibody was raised against a 16 amino acid synthetic peptide near the carboxy terminus of human MLIP. The immunogen is located within the last 50 amino acids of MLIP.
Predicted Reactive Species	Bovine
Cross Reactivity	At least three isoforms of MLIP are known to exist.
Isotype	IgG
Form	Liquid
Concentration	1 mg/mL
Purification	MLIP Antibody is affinity chromatography purified via peptide column.

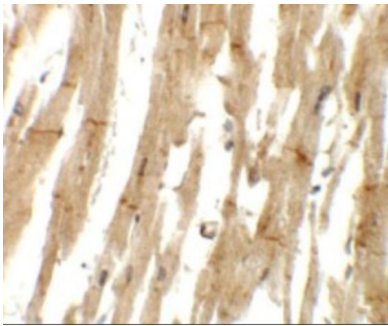
Suggested Dilutions

MLIP antibody can be used for detection of MLIP by Western blot at 1 ug/mL. Antibody can also be used for immunohistochemistry starting at 5 ug/mL. For immunofluorescence start at 20 ug/mL. Antibody validated: Western Blot in human samples; Immunohistochemistry in human samples and Immunofluorescence in human samples. All other applications and species not yet tested. Optimal dilutions for each application should be determined by the researcher.

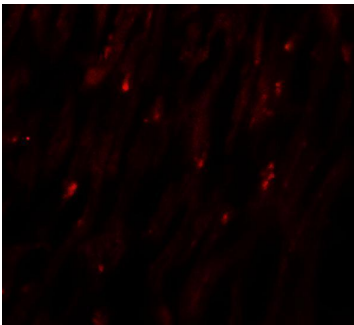
Anti-MLIP Antibody (A12261) Images



Western blot analysis of MLIP in 293 cell lysate with MLIP antibody at 1 ug/mL in (A) the absence and (B) the presence of blocking peptide.



Immunohistochemistry of MLIP in human heart tissue with MLIP antibody at 5 ug/mL.



Immunofluorescence of MLIP in human heart tissue with MLIP antibody at 20 ug/mL.

Submit a product review to [Biocompare.com](https://www.biocompare.com)

Submit a review of this product to [Biocompare.com](https://www.biocompare.com) to receive a \$20 Amazon.com giftcard! Your reviews help your fellow scientists make the right decisions. Thank you for your contribution.



Anti-MLIP Antibody

For Research Use Only. Not for use in diagnostic procedures.