

Anti-ORM1-like protein 1 ORMDL1 Antibody

Catalog Number: A12278

About ORMDL1

The ORMDL (ORM1-like) family of proteins consist of ORMDL1, ORMDL2 and ORMDL3 that may play roles in gamma-secretase complex maturation. Localized to the membrane of the endoplasmic reticulum, ORMDLs are widely expressed and are implicated in the expression of Presenilin (PSI) which is involved in Alzheimer's disease (AD). Expression of ORMDL1 is down-regulated in PSI mutations, suggesting a possible role as a therapeutic target for AD. ORMDLs have recently been identified as a potential risk factor for childhood asthma.

Overview

Product Name	Anti-ORM1-like protein 1 ORMDL1 Antibody
Reactive Species	Human, Mouse, Rat
Description	Boster Bio Anti-ORM1-like protein 1 ORMDL1 Antibody (Catalog # A12278). Tested in ELISA, WB, IHC-P, IF applications. This antibody reacts with Human, Mouse, Rat.
Application	ELISA, IF, IHC-P, WB
Clonality	Polyclonal
Formulation	ORMDL1 Antibody is supplied in PBS containing 0.02% sodium azide.
Storage Instructions	ORMDL1 antibody can be stored at 4 °C, stable for one year. Avoid repeated freeze-thaw cycles. Antibodies should not be exposed to prolonged high temperatures.
Host	Rabbit
Uniprot ID	Q9P0S3

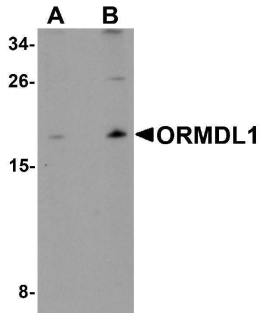
Technical Details

Immunogen	ORMDL1 antibody was raised against a 16 amino acid synthetic peptide of human ORMDL1. The immunogen is located within amino acids 50 - 100 of ORMDL1.
Predicted Reactive Species	Bovine, Chicken
Cross Reactivity	ORMDL1 antibody may cross-react with other ORMDL protein family members.
Isotype	IgG
Form	Liquid
Concentration	1 mg/mL
Purification	ORMDL1 Antibody is affinity chromatography purified via peptide column.
Suggested Dilutions	ORMDL1 antibody can be used for detection of ORMDL1 by Western blot at 1 - 2 ug/mL. Antibody

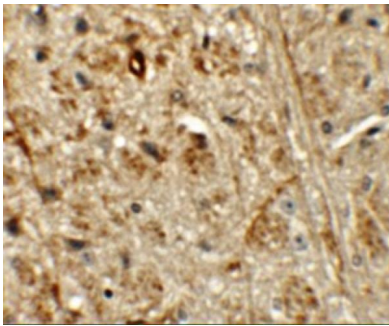
can also be used for immunohistochemistry starting at 5 ug/mL. For immunofluorescence start at 20 ug/mL.

Antibody validated: Western Blot in human samples; Immunohistochemistry in mouse samples and Immunofluorescence in mouse samples. All other applications and species not yet tested. Optimal dilutions for each application should be determined by the researcher.

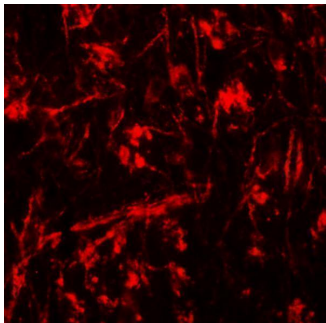
Anti-ORM1-like protein 1 ORMDL1 Antibody (A12278) Images



Western blot analysis of ORMDL1 in SK-N-SH Cell lysate with ORMDL1 antibody at (A) 1 ug/mL and (B) 2 ug/mL.



Immunohistochemistry of ORMDL1 in mouse brain tissue with ORMDL1 antibody at 5 ug/mL.



Immunofluorescence of ORMDL1 in mouse brain tissue with ORMDL1 antibody at 20 ug/mL.

Submit a product review to [Biocompare.com](https://www.biocompare.com)

Submit a review of this product to [Biocompare.com](https://www.biocompare.com) to receive a \$20 Amazon.com giftcard! Your reviews help your fellow scientists make the right decisions. Thank you for your contribution.



Anti-ORM1-like protein 1 ORMDL1 Antibody

For Research Use Only. Not for use in diagnostic procedures.