

Anti-Beclin 2 BECN2 Antibody

Catalog Number: A12290

About BECN1P1

Autophagy, the process of bulk degradation of cellular proteins through an autophagosomic-lysosomal pathway is important for normal growth control and may be defective in tumor cells (1,2). Beclin 2 is a mammalian specific homolog of the autophagy protein Beclin 1 (3). Like Beclin 1, Beclin 2 interacts with Bcl-2 and class III PI3K complex components. However, Beclin 2 functions in an additional lysosomal degradation pathway and is required for ligand-induced endolysosomal degradation of several G protein-coupled receptors (3). Beclin 2 is also required for agonist-induced lysosome-mediated degradation of EGFR in lung cancer cells, suggesting that it may also play a role in regulating other intracellular signaling pathways (4).

Overview

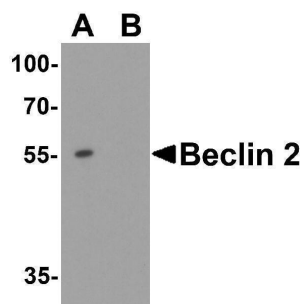
Product Name	Anti-Beclin 2 BECN2 Antibody
Reactive Species	Human
Description	Boster Bio Anti-Beclin 2 BECN2 Antibody (Catalog # A12290). Tested in ELISA, WB, IHC-P, IF applications. This antibody reacts with Human.
Application	ELISA, IF, IHC-P, WB
Clonality	Polyclonal
Formulation	Beclin 2 antibody is supplied in PBS containing 0.02% sodium azide.
Storage Instructions	Beclin 2 antibody can be stored at 4°C for three months and -20°C, stable for up to one year.
Host	Rabbit
Uniprot ID	A8MW95

Technical Details

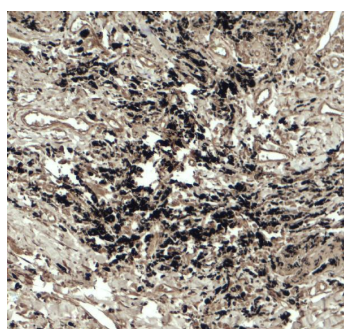
Immunogen	Beclin 2 antibody was raised against a 16 amino acid peptide near the amino terminus of human Beclin 2. The immunogen is located within amino acids 30 - 80 of Beclin 2.
Predicted Reactive Species	Bovine, Chicken
Cross Reactivity	Beclin 2 antibody is human specific. At least two isoforms of Beclin 2 are known to exist; this antibody will only detect the longer isoform. Beclin 2 antibody is predicted to not cross-react with Beclin 1.
Isotype	IgG
Form	Liquid
Concentration	1 mg/mL

Purification	Beclin 2 antibody is affinity chromatography purified via peptide column.
Suggested Dilutions	Beclin 2 antibody can be used for detection of Beclin 2 by Western blot at 1 - 2 ug/ml. Antibody can also be used for immunohistochemistry starting at 5 ug/mL. For immunofluorescence start at 20 ug/mL. Antibody validated: Western Blot in human samples; Immunohistochemistry in human samples and Immunofluorescence in human samples. All other applications and species not yet tested. Optimal dilutions for each application should be determined by the researcher.

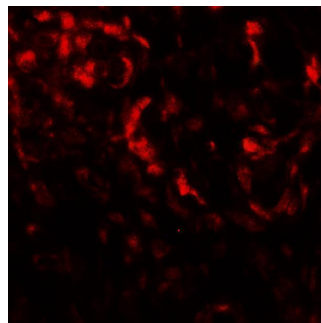
Anti-Beclin 2 BECN2 Antibody (A12290) Images



Western blot analysis of Beclin 2 in Jurkat cell lysate with Beclin 2 antibody at 1 ug/ml in (A) the absence and (B) the presence of blocking peptide.



Immunohistochemistry of Beclin 2 in human lung carcinoma tissue with Beclin 2 antibody at 5 ug/ml.



Immunofluorescence of Beclin 2 in human lung carcinoma tissue with Beclin 2 antibody at 20 ug/ml.

Submit a product review to [Biocompare.com](https://www.biocompare.com)

Submit a review of this product to [Biocompare.com](https://www.biocompare.com) to receive a \$20 Amazon.com giftcard! Your reviews help your fellow scientists make the right decisions. Thank you for your contribution.



Anti-Beclin 2 BECN2 Antibody

For Research Use Only. Not for use in diagnostic procedures.