

Anti-LGI4 Antibody

Catalog Number: A12305

About LGI4

The leucine-rich, glioma inactivated gene 4 (LGI4) is a member of the LGI family in which LGI1 is the exemplar. The LGI family consists of four of highly related proteins containing leucine-rich repeats (LRRs) which are highly similar to other transmembrane signaling molecules and receptors. LGI1 has been identified as a candidate tumor suppressor gene for glioma and plays a role in autodominate lateral temporal epilepsy (ADTLE), an epileptic syndrome characterized by focal seizures with predominant auditory symptoms. Despite its high homology with LGI1 and similar pattern of expression, mutations in LGI4 have not been found to be associated with ADTLE. However, the LGI4 gene is located in a region linked to benign familial infantile convulsions. Further study revealed that a GC-to-AT polymorphism was correlated with childhood absence epilepsy. Other studies showed that decreasing LGI4 expression in cultured cells inhibits myelination, indicating that LGI4 may play a role in neural development.

Overview

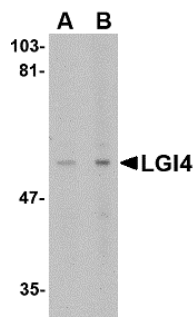
Product Name	Anti-LGI4 Antibody
Reactive Species	Human, Mouse, Rat
Description	Boster Bio Anti-LGI4 Antibody (Catalog # A12305). Tested in ELISA, WB applications. This antibody reacts with Human, Mouse, Rat.
Application	ELISA, WB
Clonality	Polyclonal
Formulation	LGI4 Antibody is supplied in PBS containing 0.02% sodium azide.
Storage Instructions	LGI4 antibody can be stored at 4°C for three months and -20°C, stable for up to one year. Avoid repeated freeze-thaw cycles. Antibodies should not be exposed to prolonged high temperatures.
Host	Rabbit
Uniprot ID	Q8N135

Technical Details

Immunogen	LGI4 antibody was raised against a 17 amino acid synthetic peptide from near the carboxy terminus of human LGI4. The immunogen is located within amino acids 470 - 520 of LGI4.
Predicted Reactive Species	Bovine, Chicken
Cross Reactivity	Two isoforms of LGI4 are known to exist; this LGI4 antibody will recognize only the larger form. This LGI4 antibody is predicted to be specific to LGI4 and not recognize other LGI proteins.
Isotype	IgG
Form	Liquid

Concentration	1 mg/mL
Purification	LGI4 Antibody is affinity chromatography purified via peptide column.
Suggested Dilutions	LGI4 antibody can be used for the detection of LGI4 by Western blot at 1 - 2 ug/mL. Antibody validated: Western Blot in rat samples. All other applications and species not yet tested. Optimal dilutions for each application should be determined by the researcher.

Anti-LGI4 Antibody (A12305) Images



Western blot analysis of LGI4 in rat brain tissue lysate with LGI4 antibody at (A) 1 and (B) 2 ug/mL.

Submit a product review to Biocompare.com

Submit a review of this product to Biocompare.com to receive a \$20 Amazon.com giftcard! Your reviews help your fellow scientists make the right decisions. Thank you for your contribution.



Anti-LGI4 Antibody

For Research Use Only. Not for use in diagnostic procedures.