

Anti-GLCTK GLYCTK Antibody

Catalog Number: A12308

About GLYCTK

Defects in GLYCTK are the cause of D-glyceric aciduria (D-GA). D-GA is a rare metabolic disease characterized by chronic metabolic acidosis and a highly variable clinical phenotype. Clinical features range from an encephalopathic presentation with seizures, microcephaly, severe mental retardation and early death, to milder manifestations with only speech delay or even normal development. Belongs to the glycerate kinase type-2 family. 7 isoforms of the human protein are produced by alternative splicing.

Guo J.-H., DNA Seq. 17:1-7(2006).

Wan D., Proc. Natl. Acad. Sci. U.S.A. 101:15724-15729(2004).

Ota T., Nat. Genet. 36:40-45(2004).

Overview

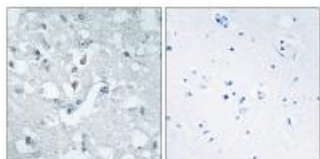
Product Name	Anti-GLCTK GLYCTK Antibody
Reactive Species	Human, Mouse, Rat
Description	Boster Bio Anti-GLCTK GLYCTK Antibody (Catalog # A12308). Tested in WB, IHC, IF applications. This antibody reacts with Human, Mouse, Rat.
Application	IF, IHC, WB
Clonality	Polyclonal
Formulation	Rabbit IgG in phosphate buffered saline (without Mg ²⁺ and Ca ²⁺), pH 7.4, 150mM NaCl, 0.02% sodium azide and 50% glycerol.
Storage Instructions	Store at -20°C for one year. For short term storage and frequent use, store at 4°C for up to one month. Avoid repeated freeze-thaw cycles.
Host	Rabbit
Uniprot ID	Q8IVS8

Technical Details

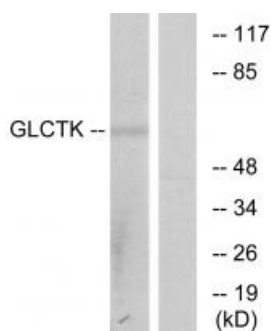
Immunogen	Synthesized peptide derived from internal of human GLCTK.
Predicted Reactive Species	Chimpanzee, Drosophila, Macaque
Isotype	IgG
Form	Liquid
Concentration	1 mg/ml

Purification	The antibody was affinity-purified from rabbit antiserum by affinity-chromatography using epitope-specific immunogen.
Suggested Dilutions	<p>Dilute the sample so that the expected range of concentrations fall within the detection range of this kit.</p> <p>If the expected range of concentration is unknown, a pilot test should be conducted to decide the optimal dilution ratio for your samples.</p> <p>Some PubMed article(s) citing the expression level of this target are as follows:</p> <p>Boster Bio's internal QC testing used:</p> <p>Western blotting: 1:500~1:3000</p> <p>Immunohistochemistry: 1:50~1:100</p> <p>Immunofluorescence: 1:100~1:500</p>

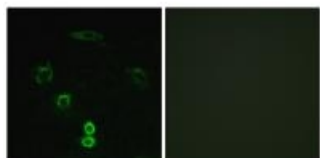
Anti-GLCTK GLYCTK Antibody (A12308) Images



Immunohistochemistry analysis of paraffin-embedded human brain tissue using GLCTK antibody A12308.



Western blot analysis of extracts from 3T3 cells, using GLCTK antibody A12308.



Immunofluorescence analysis of A549 cells, using GLCTK antibody A12308.

Submit a product review to Biocompare.com

Submit a review of this product to Biocompare.com to receive a \$20 Amazon.com giftcard! Your reviews help your fellow scientists make the right decisions. Thank you for your contribution.



Anti-GLCTK GLYCTK Antibody