

Anti-Krueppel-like factor 16 KLF16 Antibody

Catalog Number: A12312

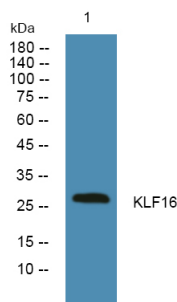
Overview

| | |
|----------------------|--|
| Product Name | Anti-Krueppel-like factor 16 KLF16 Antibody |
| Reactive Species | Human, Mouse |
| Description | Boster Bio Anti-Krueppel-like factor 16 KLF16 Antibody catalog # A12312. Tested in WB, ELISA applications. This antibody reacts with Human, Mouse. |
| Application | ELISA, WB |
| Clonality | Polyclonal |
| Formulation | Liquid form in PBS containing 50% glycerol, and 0.02% sodium azide. |
| Storage Instructions | Store at -20°C for one year. For short term storage and frequent use, store at 4°C for up to one month. Avoid repeated freeze-thaw cycles. |
| Host | Rabbit |
| Uniprot ID | Q9BXX1 |

Technical Details

| | |
|---------------------|---|
| Immunogen | Synthesized peptide derived from human protein at AA range: 10-90 |
| Isotype | IgG |
| Form | Liquid |
| Concentration | 1 mg/ml |
| Purification | KLF16 antibody was affinity-purified from rabbit antiserum by affinity-chromatography using epitope-specific immunogen. |
| Suggested Dilutions | WB 1:500-2000 ELISA 1:5000-20000 |

Anti-Krueppel-like factor 16 KLF16 Antibody (A12312) Images



Western blot analysis of lysates from SH-SY5Y cells, primary antibody was diluted at 1:1000, 4°over night

Submit a product review to Biocompare.com

Submit a review of this product to Biocompare.com to receive a \$20 Amazon.com giftcard! Your reviews help your fellow scientists make the right decisions. Thank you for your contribution.



Anti-Krueppel-like factor 16 KLF16 Antibody

For Research Use Only. Not for use in diagnostic procedures.