

Anti-HEPACAM family member 2 HEPACAM2 Antibody

Catalog Number: A12313

About HEPACAM2

HEPACAM2 (Hepatocyte cell adhesion molecule 2), a type I N-linked transmembrane glycoprotein, belongs to the immunoglobulin superfamily. The exact function of HEPACAM2 is currently unknown, but the related protein HEPACAM forms cis-homodimers on the cell surface to regulate the cell adhesion and may inhibit cell growth through suppression of cell proliferation. HEPACAM and HEPACAM2 mRNA are differentially regulated in canine tumors, with HEPACAM2 mRNA showing increased levels in adenomas, but decreased levels in metastatic carcinomas compared to normal tissues, while HEPACAM protein levels decreased in adenomas. It is therefore likely that HEPACAM2 plays a different role than HEPACAM in the development and progression to tumors.

Overview

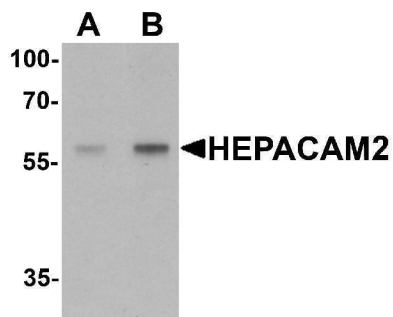
Product Name	Anti-HEPACAM family member 2 HEPACAM2 Antibody
Reactive Species	Human, Mouse, Rat
Description	Boster Bio Anti-HEPACAM family member 2 HEPACAM2 Antibody (Catalog # A12313). Tested in ELISA, WB applications. This antibody reacts with Human, Mouse, Rat.
Application	ELISA, WB
Clonality	Polyclonal
Formulation	HEPACAM2 Antibody is supplied in PBS containing 0.02% sodium azide.
Storage Instructions	HEPACAM2 antibody can be stored at 4°C for three months and -20°C, stable for up to one year. Avoid repeated freeze-thaw cycles. Antibodies should not be exposed to prolonged high temperatures.
Host	Rabbit
Uniprot ID	A8MWW5

Technical Details

Immunogen	Rabbit polyclonal HEPACAM2 antibody was raised against a 19 amino acid peptide near the carboxy terminus of human HEPACAM2. The immunogen is located within amino acids 370 - 420 of HEPACAM2.
Predicted Reactive Species	Bovine
Cross Reactivity	HEPACAM2 antibody is human, mouse and rat reactive. At least two isoforms of HEPACAM2 are known to exist; this antibody will detect both isoforms. HEPACAM2 antibody is predicted to not cross-react with HEPACAM.
Isotype	IgG

Form	Liquid
Concentration	1 mg/mL
Purification	HEPACAM2 Antibody is affinity chromatography purified via peptide column.
Suggested Dilutions	HEPACAM2 antibody can be used for detection of HEPACAM2 by Western blot at 0.5 - 1 ug/mL. Antibody validated: Western Blot in mouse samples. All other applications and species not yet tested. Optimal dilutions for each application should be determined by the researcher.

Anti-HEPACAM family member 2 HEPACAM2 Antibody (A12313) Images



Submit a product review to Biocompare.com

Submit a review of this product to Biocompare.com to receive a \$20 Amazon.com giftcard! Your reviews help your fellow scientists make the right decisions. Thank you for your contribution.



Anti-HEPACAM family member 2 HEPACAM2 Antibody

For Research Use Only. Not for use in diagnostic procedures.