

Anti-OR2H2 Antibody (C-term)

Catalog Number: A12353-1

About OR2H2

OR2H2 is an odorant receptor.

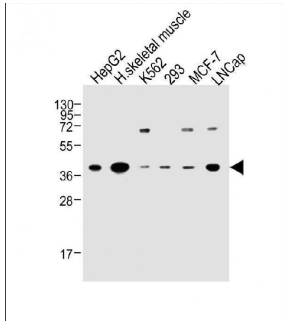
Overview

Product Name	Anti-OR2H2 Antibody (C-term)
Reactive Species	Human
Description	Boster Bio Anti-OR2H2 Antibody (C-term) (Catalog # A12353-1). Tested in WB, Flow Cytometry application(s). This antibody reacts with Human.
Application	Flow Cytometry, WB
Clonality	Polyclonal
Formulation	Purified polyclonal antibody supplied in PBS with 0.09% (W/V) sodium azide.
Storage Instructions	Maintain refrigerated at 2-8°C for up to 2 weeks. For long-term storage, store at -20°C in small aliquots to prevent freeze-thaw cycles.
Host	Rabbit
Uniprot ID	O95918

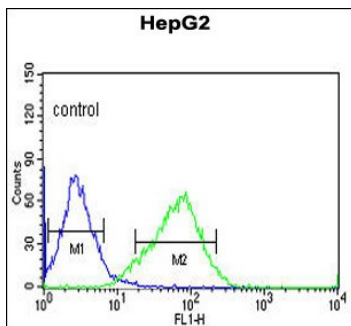
Technical Details

Immunogen	This OR2H2 antibody is generated from rabbits immunized with a KLH conjugated synthetic peptide between 276-302 amino acids from the C-terminal region of human OR2H2.
Predicted Reactive Species	Rat
Isotype	Rabbit IgG
Purification	This antibody is purified through a protein A column, followed by peptide affinity purification.
Suggested Dilutions	WB: 1:2000 FC: 1:10-1:50

Anti-OR2H2 Antibody (C-term) (A12353-1) Images



All lanes : Anti-OR2H2 Antibody (C-term) at 1:2000 dilution
Lane 1: HepG2 whole cell lysate
Lane 2: Human skeletal muscle whole tissue lysate
Lane 3: K562 whole cell lysate
Lane 4: 293 whole cell lysate
Lane 5: MCF-7 whole cell lysate
Lane 6: LNCap whole cell lysate
Lysates/proteins at 20 µg per lane. Secondary Goat Anti-Rabbit IgG, (H+L), Peroxidase conjugated at 1/10000 dilution. Predicted band size : 35 kDa
Blocking/Dilution buffer: 5% NFD/MTBST.



OR2H2 Antibody (C-term) (Cat. #A12353-1) flow cytometric analysis of HepG2 cells (right histogram) compared to a negative control cell (left histogram). FITC-conjugated goat-anti-rabbit secondary antibodies were used for the analysis.

Submit a product review to Biocompare.com

Submit a review of this product to Biocompare.com to receive a \$20 Amazon.com giftcard! Your reviews help your fellow scientists make the right decisions. Thank you for your contribution.



Anti-OR2H2 Antibody (C-term)

For Research Use Only. Not for use in diagnostic procedures.