

Anti-RGS22 Antibody

Catalog Number: A12367

About RGS22

Regulator of G-protein signaling (RGS) proteins contain an 120 amino acid conserved domain, termed the RGS domain, that acts as a GTPase-activating protein that acts to reduce the signal transmitted by the receptor-activated G-alpha subunit. RGS22 is a recently identified member of this family that localizes to the testis and can interact with guanine nucleotide binding proteins alpha 11, 12, and 13 (GNA11, GNA12, and GNA13). While RGS22 has been postulated to play a role in spermiogenesis in the testis, it is also expressed in several cancer cell lines with an epithelial origin and associated with cancer metastasis. Its overexpression in a highly metastatic cancer causes a decrease in cell migration and a reduction of the invasive potential of the cells, suggesting that RGS22 may be a potential prognostic biomarker for metastasis.

Overview

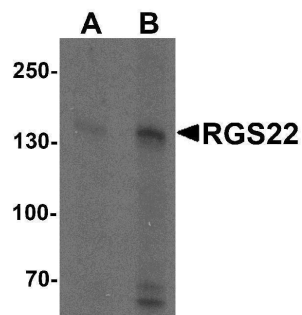
Product Name	Anti-RGS22 Antibody
Reactive Species	Human, Mouse, Rat
Description	Boster Bio Anti-RGS22 Antibody (Catalog # A12367). Tested in ELISA, WB, IF applications. This antibody reacts with Human, Mouse, Rat.
Application	ELISA, IF, WB
Clonality	Polyclonal
Formulation	RGS22 Antibody is supplied in PBS containing 0.02% sodium azide.
Storage Instructions	RGS22 antibody can be stored at 4°C for three months and -20°C, stable for up to one year. Avoid repeated freeze-thaw cycles. Antibodies should not be exposed to prolonged high temperatures.
Host	Rabbit
Uniprot ID	Q8NE09

Technical Details

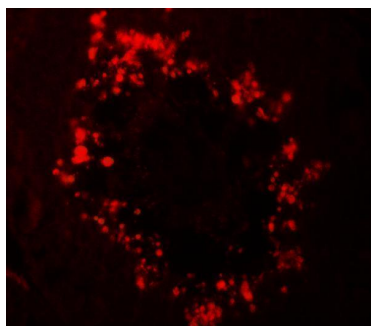
Immunogen	RGS22 antibody was raised against a 19 amino acid synthetic peptide near the amino terminus of human RGS22. The immunogen is located within amino acids 870 - 920 of RGS22.
Predicted Reactive Species	Rat
Cross Reactivity	At least four isoforms of RGS22 are known to exist; this antibody will detect the three longest isoforms. RGS22 antibody is predicted to not cross-react with other RGS proteins
Isotype	IgG
Form	Liquid
Concentration	1 mg/mL

Purification	RGS22 Antibody is affinity chromatography purified via peptide column.
Suggested Dilutions	RGS22 antibody can be used for detection of RGS22 by Western blot at 1 - 2 ug/mL. For immunofluorescence start at 20 ug/mL. Antibody validated: Western Blot in human samples and Immunofluorescence in human samples. All other applications and species not yet tested. Optimal dilutions for each application should be determined by the researcher.

Anti-RGS22 Antibody (A12367) Images



Western blot analysis of RGS22 in Jurkat cell lysate with RGS22 antibody at (A) 1 and (B) 2 ug/mL.



Immunofluorescence of RGS22 in human testis tissue with RGS22 antibody at 20 ug/mL.

Submit a product review to [Biocompare.com](https://www.biocompare.com)

Submit a review of this product to [Biocompare.com](https://www.biocompare.com) to receive a \$20 Amazon.com giftcard! Your reviews help your fellow scientists make the right decisions. Thank you for your contribution.



Anti-RGS22 Antibody

For Research Use Only. Not for use in diagnostic procedures.