

## Anti-RBP7 Antibody

Catalog Number: A12402-1

### About RBP7

The protein encoded by this gene is a member of the cellular retinol-binding protein (CRBP) family, whose members are required for vitamin A stability and metabolism. The encoded protein binds all-trans-retinol and is structurally similar to other CRBPs; however, it has a lower binding affinity for retinol than other CRBPs.

### Overview

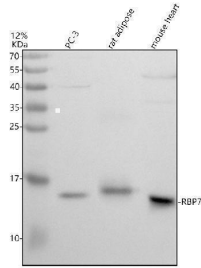
Product Name	Anti-RBP7 Antibody
Reactive Species	Human, Mouse
Description	Boster Bio Anti-RBP7 Antibody catalog # A12402-1. Tested in WB, IHC, IF, ICC, IP, ELISA applications. This antibody reacts with Human, Mouse.
Application	ELISA, IP, IF, IHC, ICC, WB
Clonality	Polyclonal
Formulation	500 ug/ml antibody with PBS, 0.02% NaN <sub>3</sub> , 1 mg stabilizing protein and 50% glycerol This antibody is supplied in a stabilized formulation. Compatibility with conjugation reactions depends on the chemistry of the conjugation method used. For conjugation methods that are not compatible with the stabilizing components present in this formulation, a carrier-free antibody format is required.
Storage Instructions	12 months from date of receipt at -20°C as supplied. 6 months at 2 to 8°C after reconstitution. Avoid repeated freezing and thawing.
Host	Rabbit
Uniprot ID	Q96R05

### Technical Details

Immunogen	E.coli-derived human RBP7 recombinant protein (Position: A3-Q132).
Form	Liquid
Concentration	500 ug/ml
Purification	Immunogen affinity purified.
Suggested Dilutions	Western blot, 1:500-2000 Immunohistochemistry, 1:50-400 Immunofluorescence, 1:50-400 Immunocytochemistry/Immunofluorescence, 1:50-400 ImmunoPrecipitation, 1:250-300

	ELISA, 1:100-1000
--	-------------------

## Anti-RBP7 Antibody (A12402-1) Images



Western blot analysis of RBP7 using anti-RBP7 antibody (A12402-1). Electrophoresis was performed on a 12% SDS-PAGE gel at 80V (Stacking gel) / 120V (Resolving gel) for 2 hours. The sample well of each lane was loaded with 30 ug of sample under reducing conditions. Lane 1: human PC-3 whole cell lysates, Lane 2: rat adipose tissue lysates, Lane 3: mouse heart tissue lysates. After electrophoresis, proteins were transferred to a nitrocellulose membrane at 150 mA for 50-90 minutes. Blocked the membrane with 5% non-fat milk/TBS for 1.5 hour at RT. The membrane was incubated with rabbit anti-RBP7 antigen affinity purified polyclonal antibody (A12402-1) at 1:1000 overnight at 4°C, then washed with TBS-0.1% Tween 3 times with 5 minutes each and probed with a goat anti-rabbit IgG-HRP secondary antibody at a dilution of 1:5000 for 1.5 hour at RT. The signal is developed using an ECL Plus Western Blotting Substrate (Catalog # AR1196-200) with Tanon 5200 system. A specific band was detected for RBP7 at approximately 15 kDa. The expected band size for RBP7 is at 16 kDa.

### Submit a product review to Biocompare.com

Submit a review of this product to Biocompare.com to receive a \$20 Amazon.com giftcard! Your reviews help your fellow scientists make the right decisions. Thank you for your contribution.



### Anti-RBP7 Antibody

For Research Use Only. Not for use in diagnostic procedures.