

Anti-PMS2/PMS2CL Antibody

Catalog Number: A12407

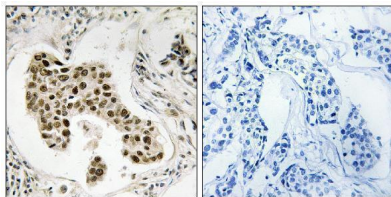
Overview

| | |
|----------------------|---|
| Product Name | Anti-PMS2/PMS2CL Antibody |
| Reactive Species | Human, Mouse, Rat |
| Description | Boster Bio Anti-PMS2/PMS2CL Antibody (Catalog# A12407). Tested in IHC, ICC, IF, ELISA applications. This antibody reacts with Human, Mouse, Rat. |
| Application | ELISA, IF, IHC, ICC |
| Clonality | Polyclonal |
| Formulation | PBS containing 50% glycerol, 0.5% stabilizing protein and 0.02% sodium azide. This antibody is supplied in a stabilized formulation. Compatibility with conjugation reactions depends on the chemistry of the conjugation method used. For conjugation methods that are not compatible with the stabilizing components present in this formulation, a carrier-free antibody format is required. |
| Storage Instructions | Store at -20°C for one year. For short-term storage and frequent use, store at 4°C for up to one month. Avoid repeated freeze-thaw cycles. |
| Host | Rabbit |
| Uniprot ID | Q68D20 |

Technical Details

| | |
|---------------------|--|
| Immunogen | A peptide derived from human PMS2CL. Immunogen sequence location: 125 - 174 |
| Isotype | Rabbit IgG |
| Form | Liquid |
| Concentration | 0.5-1mg/ml, actual concentration vary by lot. Use suggested dilution ratio to decide dilution procedure. |
| Purification | The antibody was purified from rabbit antiserum by affinity-chromatography using immunogen. |
| Suggested Dilutions | IHC 1:100 - 1:300. ELISA: 1:5000. ICC/IF 1:50-200 |

Anti-PMS2/PMS2CL Antibody (A12407) Images



Immunohistochemistry analysis of paraffin-embedded human breast carcinoma, using PMS2/PMS2CL Antibody. The picture on the right is blocked with the synthesized peptide.

Submit a product review to [Biocompare.com](https://www.biocompare.com)

Submit a review of this product to [Biocompare.com](https://www.biocompare.com) to receive a \$20 Amazon.com giftcard! Your reviews help your fellow scientists make the right decisions. Thank you for your contribution.



Anti-PMS2/PMS2CL Antibody

For Research Use Only. Not for use in diagnostic procedures.