

## Anti-GH3 domain-containing protein GHDC Antibody

Catalog Number: A12411

### About GHDC

GHDC, also known as LGP1, is a GH3 domain-containing protein that is highly expressed in normal mammary tissues and mammary tumors. GHDC is primarily located in the nuclear envelope. In mouse, its gene is located on chromosome 11 adjacent to the STAT3/5 locus. Little is known of the function of this protein.

### Overview

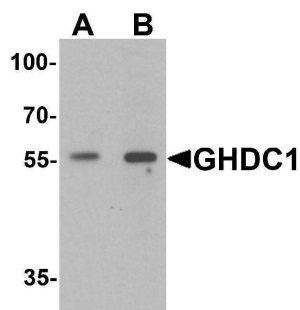
Product Name	Anti-GH3 domain-containing protein GHDC Antibody
Reactive Species	Human, Mouse, Rat
Description	Boster Bio Anti-GH3 domain-containing protein GHDC Antibody (Catalog # A12411). Tested in ELISA, WB, IF applications. This antibody reacts with Human, Mouse, Rat.
Application	ELISA, IF, WB
Clonality	Polyclonal
Formulation	GHDC Antibody is supplied in PBS containing 0.02% sodium azide.
Storage Instructions	GHDC antibody can be stored at 4°C for three months and -20°C, stable for up to one year. Avoid repeated freeze-thaw cycles. Antibodies should not be exposed to prolonged high temperatures.
Host	Rabbit
Uniprot ID	Q8N2G8

### Technical Details

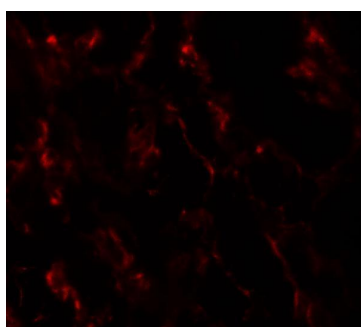
Immunogen	Rabbit polyclonal GHDC antibody was raised against a 19 amino acid peptide near the amino terminus of human GHDC. The immunogen is located within amino acids 100 - 150 of GHDC.
Predicted Reactive Species	Bovine
Cross Reactivity	Multiple isoforms are known to exist.
Isotype	IgG
Form	Liquid
Concentration	1 mg/mL
Purification	GHDC Antibody is affinity chromatography purified via peptide column.
Suggested Dilutions	GHDC antibody can be used for detection of GHDC by Western blot at 0.5 - 1 ug/mL. For immunofluorescence start at 20 ug/mL.

Antibody validated: Western Blot in human samples and Immunofluorescence in human samples. All other applications and species not yet tested. Optimal dilutions for each application should be determined by the researcher.

## Anti-GH3 domain-containing protein GHDC Antibody (A12411) Images



Western blot analysis of GHDC in 293 cell lysate with GHDC antibody at (A) 0.5 and (B) 1 ug/mL.



Immunofluorescence of GHDC1 in human breast tissue with GHDC1 antibody at 20 ug/mL.

### Submit a product review to [Biocompare.com](https://www.biocompare.com)

Submit a review of this product to [Biocompare.com](https://www.biocompare.com) to receive a \$20 Amazon.com giftcard! Your reviews help your fellow scientists make the right decisions. Thank you for your contribution.



Anti-GH3 domain-containing protein GHDC Antibody

For Research Use Only. Not for use in diagnostic procedures.