

Anti-ASB11 Antibody (N-term)

Catalog Number: A12421

About ASB11

May be a substrate-recognition component of a SCF-like ECS (Elongin-Cullin-SOCS-box protein) E3 ubiquitin-protein ligase complex which mediates the ubiquitination and subsequent proteasomal degradation of target proteins (By similarity).

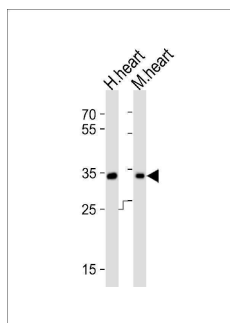
Overview

Product Name	Anti-ASB11 Antibody (N-term)
Reactive Species	Human
Description	Boster Bio Anti-ASB11 Antibody (N-term) (Catalog # A12421). Tested in WB application(s). This antibody reacts with Human.
Application	WB
Clonality	Polyclonal
Formulation	Purified polyclonal antibody supplied in PBS with 0.09% (W/V) sodium azide.
Storage Instructions	Maintain refrigerated at 2-8°C for up to 2 weeks. For long-term storage, store at -20°C in small aliquots to prevent freeze-thaw cycles.
Host	Rabbit
Uniprot ID	Q8WXH4

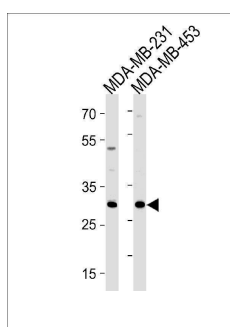
Technical Details

Immunogen	This ASB11 antibody is generated from rabbits immunized with a KLH conjugated synthetic peptide between 26-54 amino acids from the N-terminal region of human ASB11.
Predicted Reactive Species	Bovine, Mouse
Isotype	Rabbit IgG
Purification	This antibody is purified through a protein A column, followed by peptide affinity purification.
Suggested Dilutions	WB: 1:1000

Anti-ASB11 Antibody (N-term) (A12421) Images



Western blot analysis of lysates from human heart, mouse heart tissue (from left to right), using ASB11 Antibody (N-term). A12421 was diluted at 1:1000 at each lane. A goat anti-rabbit IgG H&L (HRP) at 1:10000 dilution was used as the secondary antibody. Lysates at 20ug per lane.



ASB11 Antibody (N-term) (Cat. # A12421) western blot analysis in MDA-MB-231,MDA-MB-453 cell line lysates (35ug/lane). This demonstrates the ASB11 antibody detected the ASB11 protein (arrow).

Submit a product review to [Biocompare.com](https://www.biocompare.com)

Submit a review of this product to [Biocompare.com](https://www.biocompare.com) to receive a \$20 Amazon.com giftcard! Your reviews help your fellow scientists make the right decisions. Thank you for your contribution.



Anti-ASB11 Antibody (N-term)

For Research Use Only. Not for use in diagnostic procedures.