

## Anti-CD158f1/2 KIR2DL5A Antibody

Catalog Number: A12423

### Overview

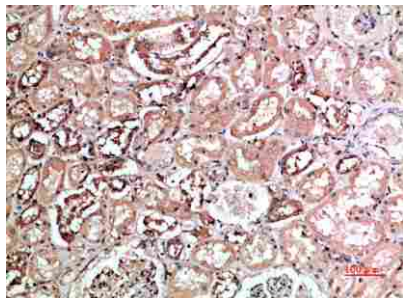
Product Name	Anti-CD158f1/2 KIR2DL5A Antibody
Reactive Species	Human
Description	Boster Bio Anti-CD158f1/2 KIR2DL5A Antibody catalog # A12423. Tested in IHC, IF, ELISA applications. This antibody reacts with Human.
Application	ELISA, IF, IHC
Clonality	Polyclonal
Formulation	PBS, pH 7.4, containing 0.02% sodium azide as Preservative and 50% Glycerol.
Storage Instructions	Store at -20°C for one year. For short term storage and frequent use, store at 4°C for up to one month. Avoid repeated freeze-thaw cycles.
Host	Rabbit
Uniprot ID	Q8N109

### Technical Details

Immunogen	Synthetic peptide from human protein at AA range: 121-170
Isotype	IgG
Form	Liquid
Concentration	1 mg/ml
Purification	Immunogen affinity purified
Suggested Dilutions	IHC 1:50-200 ELISA 1:10000-20000 IF 1:50-200

## Anti-CD158f1/2 KIR2DL5A Antibody (A12423) Images

---



Immunohistochemical analysis of paraffin-embedded human-kidney, antibody was diluted at 1:200.

### Submit a product review to [Biocompare.com](https://www.biocompare.com)

---

Submit a review of this product to [Biocompare.com](https://www.biocompare.com) to receive a \$20 Amazon.com giftcard! Your reviews help your fellow scientists make the right decisions. Thank you for your contribution.



Anti-CD158f1/2 KIR2DL5A Antibody

For Research Use Only. Not for use in diagnostic procedures.