

## Anti-Synaptophysin-like protein 1 SYPL1 Antibody

Catalog Number: A12424

### About SYPL1

The synaptophysin-like protein 1, also known as pantophysin, is a homolog of the neuroendocrine-specific protein synaptophysin, with the highest level of homology across its four transmembrane domains. Unlike synaptophysin however, SYPL1 is ubiquitously expressed and found in small cytoplasmic transport vesicles regardless of their content. SYPL1 is thought to play a multifunctional role in vesicle biogenesis and transport and is a component of adipocyte transport vesicles, and thus may be involved in adipocyte secretion. SYPL1 also interacts with vesicle-associated membrane protein 2 (VAMP-2) in adipocytes and associates with GLUT4-containing vesicles.

### Overview

Product Name	Anti-Synaptophysin-like protein 1 SYPL1 Antibody
Reactive Species	Human, Mouse, Rat
Description	Boster Bio Anti-Synaptophysin-like protein 1 SYPL1 Antibody (Catalog # A12424). Tested in ELISA, WB applications. This antibody reacts with Human, Mouse, Rat.
Application	ELISA, WB
Clonality	Polyclonal
Formulation	SYPL1 Antibody is supplied in PBS containing 0.02% sodium azide.
Storage Instructions	SYPL1 antibody can be stored at 4°C for three months and -20°C, stable for up to one year. Avoid repeated freeze-thaw cycles. Antibodies should not be exposed to prolonged high temperatures.
Host	Rabbit
Uniprot ID	Q16563

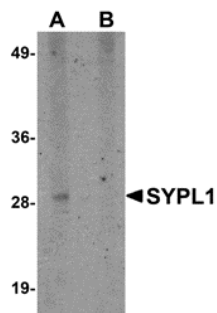
### Technical Details

Immunogen	SYPL1 antibody was raised against a 16 amino acid synthetic peptide from near the amino terminus of human SYPL1. The immunogen is located within the first 50 amino acids of SYPL1.
Predicted Reactive Species	Rat
Cross Reactivity	This antibody will not recognize synaptophysin of SYPL2. Two isoforms of SYPL1 are known to exist; this antibody will only recognize the longer isoform.
Isotype	IgG
Form	Liquid
Concentration	1 mg/mL
Purification	SYPL1 Antibody is affinity chromatography purified via peptide column.

Suggested Dilutions

SYPL1 antibody can be used for detection of SYPL1 by Western blot at 1 ug/mL.  
Antibody validated: Western Blot in human samples. All other applications and species not yet tested. Optimal dilutions for each application should be determined by the researcher.

## Anti-Synaptophysin-like protein 1 SYPL1 Antibody (A12424) Images



Western blot analysis of SYPL1 in human brain tissue lysate with SYPL1 antibody at 1 ug/mL in (A) the absence and (B) the presence of blocking peptide.

### Submit a product review to Biocompare.com

Submit a review of this product to Biocompare.com to receive a \$20 Amazon.com giftcard! Your reviews help your fellow scientists make the right decisions. Thank you for your contribution.



Anti-Synaptophysin-like protein 1 SYPL1 Antibody

For Research Use Only. Not for use in diagnostic procedures.