

## Anti-EPM2AIP1 Antibody (N-term)

Catalog Number: A12427

### About EPM2AIP1

May be a substrate-recognition component of a SCF-like ECS (Elongin-Cullin-SOCS-box protein) E3 ubiquitin-protein ligase complex which mediates the ubiquitination and subsequent proteasomal degradation of target proteins (By similarity).

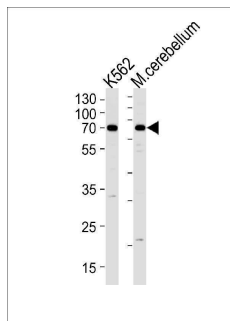
### Overview

Product Name	Anti-EPM2AIP1 Antibody (N-term)
Reactive Species	Human, Mouse
Description	Boster Bio Anti-EPM2AIP1 Antibody (N-term) (Catalog # A12427). Tested in WB application(s). This antibody reacts with Human, Mouse.
Application	WB
Clonality	Polyclonal
Formulation	Purified polyclonal antibody supplied in PBS with 0.09% (W/V) sodium azide.
Storage Instructions	Maintain refrigerated at 2-8°C for up to 2 weeks. For long-term storage, store at -20°C in small aliquots to prevent freeze-thaw cycles.
Host	Rabbit
Uniprot ID	Q7L775

### Technical Details

Immunogen	This EPM2AIP1 antibody is generated from rabbits immunized with a KLH conjugated synthetic peptide between 39-62 amino acids from the N-terminal region of human EPM2AIP1.
Predicted Reactive Species	Bovine, Mouse
Isotype	Rabbit IgG
Purification	This antibody is purified through a protein A column, followed by peptide affinity purification.
Suggested Dilutions	WB: 1:1000

## Anti-EPM2AIP1 Antibody (N-term) (A12427) Images



EPM2AIP1 Antibody (N-term) western blot analysis in K562 cell line and mouse cerebellum tissue lysates (35ug/lane). This demonstrates the EPM2AIP1 antibody detected the EPM2AIP1 protein (arrow).

### Submit a product review to Biocompare.com

Submit a review of this product to Biocompare.com to receive a \$20 Amazon.com giftcard! Your reviews help your fellow scientists make the right decisions. Thank you for your contribution.



Anti-EPM2AIP1 Antibody (N-term)

For Research Use Only. Not for use in diagnostic procedures.