

Anti-SLC35D2 Antibody

Catalog Number: A12449

About SLC35D2

The solute carrier family SLC35 consists of at least 17 proteins that act as nucleotide sugar transporters localized to the Golgi apparatus and endoplasmic reticulum. The role of the ER-resident SLC family member SLC35D2 is to transport both UDP-glucuronic acid and UDP-N-acetylgalactosamine. Its overexpression in transfected cells modulated cell surface heparin sulfate expression, suggesting that SLC35D2 is involved in heparin sulfate synthesis. SLC35D2-overexpressing cells also showed increased constitutive and hypotonic stress-stimulated release of UDP-GlcNAc, suggesting that SLC35D2 may be involved in UDP-sugar release and cell signaling.

Overview

Product Name	Anti-SLC35D2 Antibody
Reactive Species	Human
Description	Boster Bio Anti-SLC35D2 Antibody (Catalog # A12449). Tested in ELISA, WB, ICC applications. This antibody reacts with Human.
Application	ELISA, ICC, WB
Clonality	Polyclonal
Formulation	SLC35D2 Antibody is supplied in PBS containing 0.02% sodium azide.
Storage Instructions	SLC35D2 antibody can be stored at 4°C for three months and -20°C, stable for up to one year. Avoid repeated freeze-thaw cycles. Antibodies should not be exposed to prolonged high temperatures.
Host	Rabbit
Uniprot ID	Q76EJ3

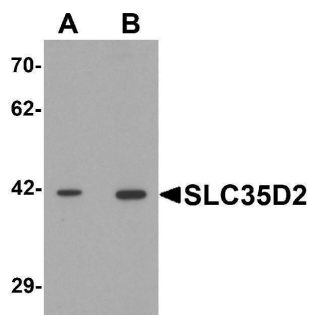
Technical Details

Immunogen	SLC35D2 antibody was raised against a 14 amino acid synthetic peptide near the carboxy terminus of human SLC35D2. The immunogen is located within the last 50 amino acids of SLC35D2.
Predicted Reactive Species	Mouse
Cross Reactivity	At least two isoforms of SLC35D2 are known to exist; this antibody will recognize both isoforms. SLC35D2 antibody is predicted to not cross-react with SLC35D1 or SLC35D3.
Isotype	IgG
Form	Liquid
Concentration	1 mg/mL
Purification	SLC35D2 Antibody is affinity chromatography purified via peptide column.

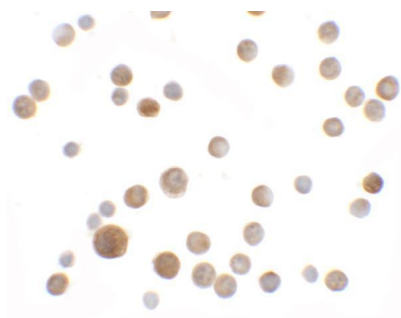
Suggested Dilutions

SLC35D2 antibody can be used for detection of SLC35D2 by Western blot at 1 - 2 ug/mL. Antibody can also be used for immunocytochemistry starting at 5 ug/mL.
Antibody validated: Western Blot in human samples and Immunocytochemistry in human samples.
All other applications and species not yet tested. Optimal dilutions for each application should be determined by the researcher.

Anti-SLC35D2 Antibody (A12449) Images



Western blot analysis of SLC35D2 in HeLa cell lysate with SLC35D2 antibody at (A) 1 and (B) 2 ug/mL.



Immunocytochemistry of SLC35D2 in HeLa cells with SLC35D2 antibody at 5 ug/mL.

Submit a product review to Biocompare.com

Submit a review of this product to Biocompare.com to receive a \$20 Amazon.com giftcard! Your reviews help your fellow scientists make the right decisions. Thank you for your contribution.



Anti-SLC35D2 Antibody

For Research Use Only. Not for use in diagnostic procedures.