

Anti-Rubicon RUBCN Antibody

Catalog Number: A12453

About KIAA0226

Two Beclin-1-interacting proteins, the run domain Beclin-1 interacting and cysteine-rich containing protein (Rubicon) and ATG14L, reciprocally regulate autophagy at different stages. Knockdown of Rubicon caused enhancement of autophagy while that of ATG14L caused a defect in autophagosome formation (1). Rubicon functions as part of a Beclin-1-PIK3C3-containing autophagy complex and is also an essential, positive regulator of the NADPH oxidase complex (2). Upon microbial infection or TLR2 activation, Rubicon interacts with the CYBA subunit of the NADPH oxidase complex, leading to a burst of reactive oxygen species and inflammatory cytokines (2).

Overview

Product Name	Anti-Rubicon RUBCN Antibody
Reactive Species	Human, Mouse, Rat
Description	Boster Bio Anti-Rubicon RUBCN Antibody (Catalog # A12453). Tested in ELISA, WB, IHC-P, IF applications. This antibody reacts with Human, Mouse, Rat.
Application	ELISA, IF, IHC-P, WB
Clonality	Polyclonal
Formulation	Rubicon antibody is supplied in PBS containing 0.02% sodium azide.
Storage Instructions	Rubicon antibody can be stored at 4°C for three months and -20°C, stable for up to one year.
Host	Rabbit
Uniprot ID	Q92622

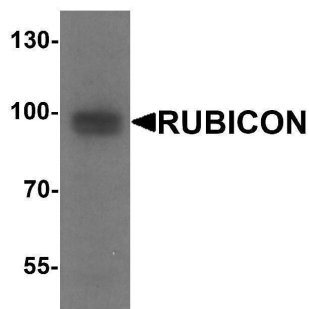
Technical Details

Immunogen	Rubicon antibody was raised against a 16 amino acid peptide near the amino terminus of human Rubicon. The immunogen is located within amino acids 240 - 290 of Rubicon.
Predicted Reactive Species	Mouse
Cross Reactivity	Rubicon antibody is human, mouse and rat reactive. Multiple isoforms of Rubicon are known to exist.
Isotype	IgG
Form	Liquid
Concentration	1 mg/mL
Purification	Rubicon antibody is affinity chromatography purified via peptide column.

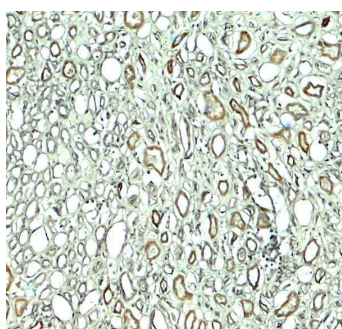
Suggested Dilutions

Rubicon body can be used for detection of Rubicon by Western blot at 1 - 2 ug/ml. Antibody can also be used for Immunohistochemistry starting at 5 ug/mL. For immunofluorescence start at 20 ug/mL. Antibody validated: Western Blot in human samples; Immunohistochemistry in human samples and Immunofluorescence in human samples. All other applications and species not yet tested. Optimal dilutions for each application should be determined by the researcher.

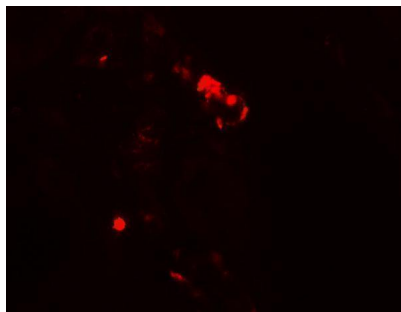
Anti-Rubicon RUBCN Antibody (A12453) Images



Western blot analysis of Rubicon in 293 cell lysate with Rubicon antibody at 1 ug/ml.



Immunohistochemistry of RUBICON in human kidney tissue with RUBICON antibody at 5 ug/ml.



Immunofluorescence of RUBICON in human kidney tissue with RUBICON antibody at 20 ug/ml.

Submit a product review to [Biocompare.com](https://www.biocompare.com)

Submit a review of this product to [Biocompare.com](https://www.biocompare.com) to receive a \$20 Amazon.com giftcard! Your reviews help your fellow scientists make the right decisions. Thank you for your contribution.



Anti-Rubicon RUBCN Antibody

For Research Use Only. Not for use in diagnostic procedures.