

Anti-Histone H3 (T11) HIST1H3A Antibody

Catalog Number: A12477T11

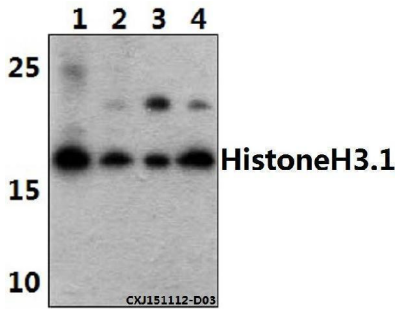
Overview

Product Name	Anti-Histone H3 (T11) HIST1H3A Antibody
Reactive Species	Human, Mouse, Rat
Description	Boster Bio Anti-Histone H3 (T11) HIST1H3A Antibody catalog # A12477T11. Tested in WB,IF,IP applications. This antibody reacts with Human,Mouse,Rat.
Application	IP, IF, WB
Clonality	Polyclonal
Formulation	Rabbit IgG, 1mg/ml in PBS with 0.02% sodium azide, 50% glycerol, pH7.2
Storage Instructions	Store at -20°C for one year. For short term storage and frequent use, store at 4°C for up to one month. Avoid repeated freeze-thaw cycles.
Host	Rabbit
Uniprot ID	P68431/Q71DI3/P84243

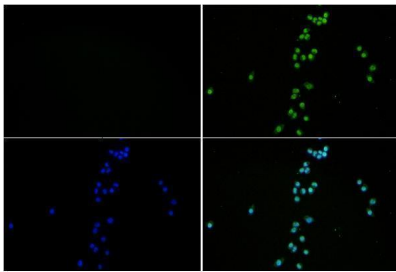
Technical Details

Immunogen	Synthetic peptide, corresponding to Human Histone H3.
Isotype	IgG
Form	Liquid
Concentration	1 mg/ml
Purification	The antibody was affinity-purified from rabbit antiserum by affinity-chromatography using epitope-specific immunogen and the purity is > 95% (by SDS-PAGE).
Suggested Dilutions	WB: 1:1000-1:2000 IF: 1:50-1:200 IP: 1:50-1:200

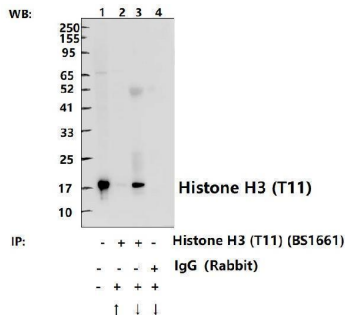
Anti-Histone H3 (T11) HIST1H3A Antibody (A12477T11) Images



Western blot (WB) analysis of Histone H3 polyclonal antibody at 1:1000 dilution Lane1:Hela whole cell lysate(40ug) Lane2:HEK293T whole cell lysate(40ug) Lane3:A549 whole cell lysate(40ug) Lane4:CT-26 whole cell lysate(40ug) Lane5:C6 whole cell lysate(40ug)



Immunofluorescence analysis of BV2 cells using Histone H3 antibody at dilution of 1:50.



Immunoprecipitation of BV2 cell lysates using Histone H3 (T11) pAb (Sepharose Bead Conjugate)#BD0048 (lane 2 and lane 3) and Nonspecific IgG Control (Sepharose Bead Conjugate)#BD0048 (lane 4) .Lane 1 is 30% input. The western blot was probed using Histone H3 (T11) pAb #BS1661.

Submit a product review to Biocompare.com

Submit a review of this product to Biocompare.com to receive a \$20 Amazon.com giftcard! Your reviews help your fellow scientists make the right decisions. Thank you for your contribution.



Anti-Histone H3 (T11) HIST1H3A Antibody

For Research Use Only. Not for use in diagnostic procedures.