

## Anti-L1TD1 Antibody

Catalog Number: A12503

### About L1TD1

L1TD1 (ECAT11) is a member of the family of Embryonic Stem Cell Associated Transcripts (ECAT) that play an important role in stem cell biology. ECAT4 (Nanog) is a master regulator for the maintenance of mESC and hESC. ECAT5 was identified to be Embryonic stem cell expressed Ras (ERas), a Ras-like oncogene that is important in regulating mESC proliferation. ECAT9 (GDF3) is an important factor that helps maintain mESC pluripotency by inhibiting bone morphogenetic protein (BMP) signaling. L1TD1 is highly enriched in undifferentiated hESC and L1TD1 is a target gene of Nanog.

### Overview

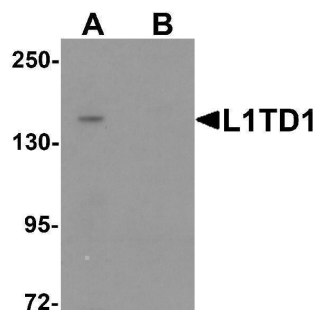
Product Name	Anti-L1TD1 Antibody
Reactive Species	Human
Description	Boster Bio Anti-L1TD1 Antibody (Catalog # A12503). Tested in ELISA, WB applications. This antibody reacts with Human.
Application	ELISA, WB
Clonality	Polyclonal
Formulation	L1TD1 Antibody is supplied in PBS containing 0.02% sodium azide.
Storage Instructions	L1TD1 antibody can be stored at 4°C for three months and -20°C, stable for up to one year. Avoid repeated freeze-thaw cycles. Antibodies should not be exposed to prolonged high temperatures.
Host	Rabbit
Uniprot ID	Q5T7N2

### Technical Details

Immunogen	L1TD1 antibody was raised against a 17 amino acid synthetic peptide near the carboxy terminus of human L1TD1. The immunogen is located within amino acids 690 - 740 of L1TD1.
Predicted Reactive Species	Mouse
Cross Reactivity	L1TD1 antibody is predicted to not cross-react with other ECAT protein family members
Isotype	IgG
Form	Liquid
Concentration	1 mg/mL
Purification	L1TD1 Antibody is affinity chromatography purified via peptide column.
Suggested Dilutions	L1TD1 antibody can be used for detection of L1TD1 by Western blot at 1 ug/mL.

Antibody validated: Western Blot in human samples. All other applications and species not yet tested. Optimal dilutions for each application should be determined by the researcher.

## Anti-L1TD1 Antibody (A12503) Images



Western blot analysis of L1TD1 in Jurkat cell lysate with L1TD1 antibody at 1 ug/mL in (A) the absence and (B) the presence of blocking peptide.

### Submit a product review to Biocompare.com

Submit a review of this product to Biocompare.com to receive a \$20 Amazon.com giftcard! Your reviews help your fellow scientists make the right decisions. Thank you for your contribution.



### Anti-L1TD1 Antibody

For Research Use Only. Not for use in diagnostic procedures.