

Anti-WDR61 Antibody

Catalog Number: A12524

About WDR61

WDR61 (WD-repeat-containing protein 61), also known as SKI8 or REC14, is a subunit of the human PAF and SKI complexes, which function in transcriptional regulation and are involved in events downstream of RNA synthesis, such as RNA surveillance (1,2). PAF1C is implicated in regulation of development and maintenance of embryonic stem cell pluripotency. Component of the SKI complex which is thought to be involved in exosome-mediated RNA decay and associates with transcriptionally active genes in a manner dependent on PAF1C (3,4).

Overview

Product Name	Anti-WDR61 Antibody
Reactive Species	Human, Mouse, Rat
Description	Boster Bio Anti-WDR61 Antibody (Catalog # A12524). Tested in ELISA, WB, IHC-P, IF applications. This antibody reacts with Human, Mouse, Rat.
Application	ELISA, IF, IHC-P, WB
Clonality	Polyclonal
Formulation	WDR61 antibody is supplied in PBS containing 0.02% sodium azide.
Storage Instructions	WDR61 antibody can be stored at 4°C for three months and -20°C, stable for up to one year.
Host	Rabbit
Uniprot ID	Q9GZS3

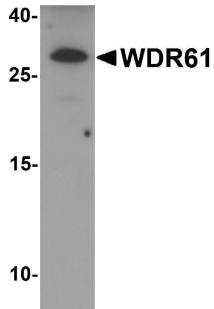
Technical Details

Immunogen	WDR61 antibody was raised against a 14 amino acid peptide near the amino terminus of human WDR61. The immunogen is located within the first 50 amino acids of WDR61.
Predicted Reactive Species	Bovine, Chicken
Cross Reactivity	WDR61 antibody is human, mouse and rat reactive.
Isotype	IgG
Form	Liquid
Concentration	1 mg/mL
Purification	WDR61 antibody is affinity chromatography purified via peptide column.
Suggested Dilutions	WDR61 antibody can be used for detection of WDR61 by Western blot at 1 - 2 ug/ml. Antibody can also be used for immunohistochemistry starting at 5 ug/mL. For immunofluorescence start at 20

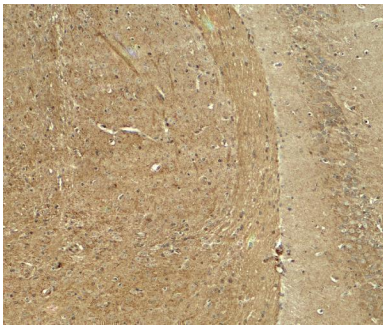
ug/mL.

Antibody validated: Western Blot in human samples; Immunohistochemistry in mouse samples and Immunofluorescence in mouse samples. All other applications and species not yet tested. Optimal dilutions for each application should be determined by the researcher.

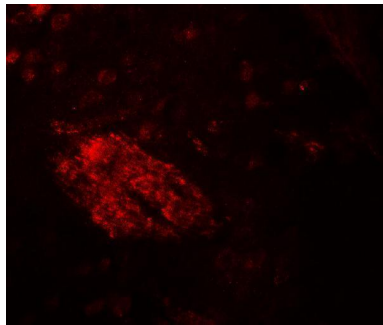
Anti-WDR61 Antibody (A12524) Images



Western blot analysis of WDR61 in SK-N-SH cell lysate with WDR61 antibody at 1 ug/ml.



Immunohistochemistry of WDR61 in mouse brain tissue with WDR61 antibody at 5 ug/ml.



Immunofluorescence of WDR61 in mouse brain tissue with WDR61 antibody at 20 ug/ml.

Submit a product review to [Biocompare.com](https://www.biocompare.com)

Submit a review of this product to [Biocompare.com](https://www.biocompare.com) to receive a \$20 Amazon.com giftcard! Your reviews help your fellow scientists make the right decisions. Thank you for your contribution.



Anti-WDR61 Antibody

For Research Use Only. Not for use in diagnostic procedures.