

Anti-Homeobox protein Nkx-2.8 NKX2-8 Antibody

Catalog Number: A12535-1

About NKX2-8

NKX2-8 (NK2 homeobox 8) is a member of a family of transcription factors that are involved in embryonic development and cell fate. It is expressed in the ventral foregut, the developing heart, the epithelial layers of the branchial arches and in the dorsal mesoderm. In conjunction with related protein, NKX2-5, NKX2-8 may play a role in cardiac embryonic development. NKX2-8 is also thought to be involved in lung development and is suspected of being an oncogene in lung cancer that is activated by way of gene amplification at chromosome 14q13.

Overview

Product Name	Anti-Homeobox protein Nkx-2.8 NKX2-8 Antibody
Reactive Species	Human, Mouse, Rat
Description	Boster Bio Anti-Homeobox protein Nkx-2.8 NKX2-8 Antibody (Catalog # A12535-1). Tested in ELISA, WB, IHC-P, IF applications. This antibody reacts with Human, Mouse, Rat.
Application	ELISA, IF, IHC-P, WB
Clonality	Polyclonal
Formulation	NKX2-8 Antibody is supplied in PBS containing 0.02% sodium azide.
Storage Instructions	NKX2-8 antibody can be stored at 4°C for three months and -20°C, stable for up to one year. Avoid repeated freeze-thaw cycles. Antibodies should not be exposed to prolonged high temperatures.
Host	Rabbit
Uniprot ID	O15522

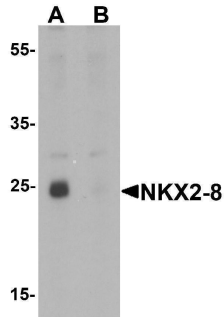
Technical Details

Immunogen	NKX2-8 antibody was raised against a 19 amino acid synthetic peptide near the center of human NKX2-8. The immunogen is located within amino acids 60 - 110 of NKX2-8.
Predicted Reactive Species	Bovine, Chicken
Cross Reactivity	NKX2-8 antibody is predicted to not cross-react with other NK2 homeobox family members.
Isotype	IgG
Form	Liquid
Concentration	1 mg/mL
Purification	NKX2-8 Antibody is affinity chromatography purified via peptide column.
Suggested Dilutions	NKX2-8 antibody can be used for detection of NKX2-8 by Western blot at 1 ug/mL. Antibody can

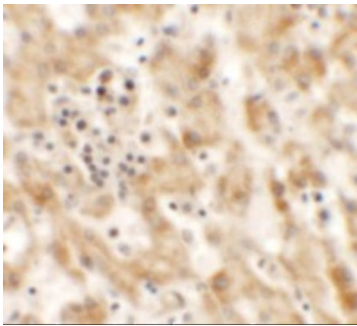
also be used for immunohistochemistry starting at 2.5 ug/mL. For immunofluorescence start at 2.5 ug/mL.

Antibody validated: Western Blot in rat samples; Immunohistochemistry in human samples and Immunofluorescence in human samples. All other applications and species not yet tested. Optimal dilutions for each application should be determined by the researcher.

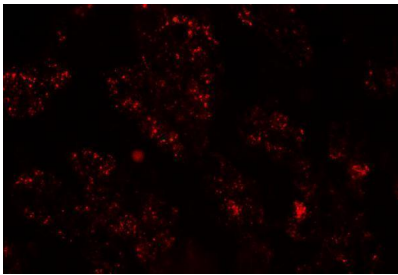
Anti-Homeobox protein Nkx-2.8 NKX2-8 Antibody (A12535-1) Images



Western blot analysis of NKX2-8 in rat liver tissue lysate with NKX2-8 antibody at 1 ug/mL in (A) the absence and (B) the presence of blocking peptide



Immunohistochemistry of NKX2-8 in human liver tissue with NKX2-8 antibody at 2.5 ug/mL.



Immunofluorescence of NKX-8 in human liver tissue with NKX2-8 antibody at 20 ug/mL.

Submit a product review to [Biocompare.com](https://www.biocompare.com)

Submit a review of this product to [Biocompare.com](https://www.biocompare.com) to receive a \$20 Amazon.com giftcard! Your reviews help your fellow scientists make the right decisions. Thank you for your contribution.



Anti-Homeobox protein Nkx-2.8 NKX2-8 Antibody

For Research Use Only. Not for use in diagnostic procedures.