

## Anti-N4BP1 (Y415) Antibody

Catalog Number: A12575Y415

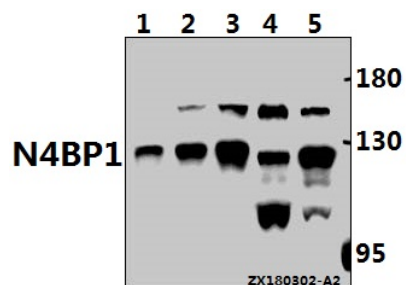
### Overview

Product Name	Anti-N4BP1 (Y415) Antibody
Reactive Species	Human, Mouse, Rat
Description	Boster Bio Anti-N4BP1 (Y415) Antibody catalog # A12575Y415. Tested in WB,IHC applications. This antibody reacts with Human,Mouse,Rat.
Application	IHC, WB
Clonality	Polyclonal
Formulation	Rabbit IgG, 1mg/ml in PBS with 0.02% sodium azide, 50% glycerol, pH7.2
Storage Instructions	Store at -20°C for one year. For short term storage and frequent use, store at 4°C for up to one month. Avoid repeated freeze-thaw cycles.
Host	Rabbit
Uniprot ID	O75113

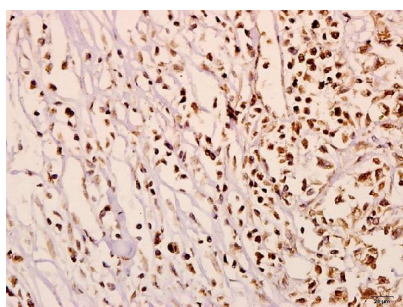
### Technical Details

Immunogen	Synthetic peptide, corresponding to amino acids 391-440 of Human N4BP1.
Isotype	IgG
Form	Liquid
Concentration	1 mg/ml
Purification	The antibody was affinity-purified from rabbit antiserum by affinity-chromatography using epitope-specific immunogen and the purity is > 95% (by SDS-PAGE).
Suggested Dilutions	WB: 1:500-1:1000 IHC: 1:50-1:200

## Anti-N4BP1 (Y415) Antibody (A12575Y415) Images



Western blot (WB) analysis of N4BP1 (Y415) pAb at 1:1000 dilution Lane1:A2780 whole cell lysate(20ug) Lane2:A549 whole cell lysate(20ug) Lane3:HEK293 whole cell lysate(20ug) Lane4:PC12 whole cell lysate(40ug) Lane5:AML-12 whole cell lysate(40ug)



Immunohistochemistry (IHC) analyzes of N4BP1 (Y415) pAb in paraffin-embedded human breast carcinoma tissue at 1:50.

### Submit a product review to Biocompare.com

Submit a review of this product to Biocompare.com to receive a \$20 Amazon.com giftcard! Your reviews help your fellow scientists make the right decisions. Thank you for your contribution.



### Anti-N4BP1 (Y415) Antibody

For Research Use Only. Not for use in diagnostic procedures.