

## Anti-SAPS2 (PPP6R2) Rabbit Polyclonal Antibody

Catalog Number: A12592-1

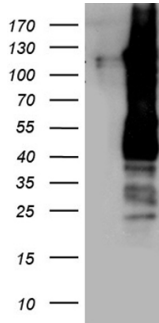
### Overview

Product Name	Anti-SAPS2 (PPP6R2) Rabbit Polyclonal Antibody
Reactive Species	Human, Mouse
Description	Boster Bio Rabbit Polyclonal anti-PPP6R2 Antibody. Catalog# A12592-1. Tested in WB. This antibody reacts with Human, Mouse.
Application	WB
Clonality	Polyclonal
Formulation	PBS with 0.02% sodium azide, 50% glycerol, pH7.3
Storage Instructions	Store at -20°C as received.
Host	Rabbit
Uniprot ID	O75170

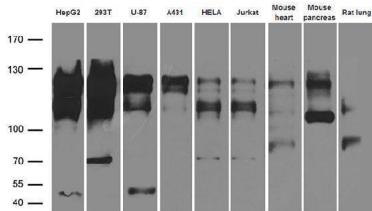
### Technical Details

Immunogen	Recombinant protein of human PPP6R2
Isotype	IgG
Concentration	2.5 mg/ml
Purification	Purified from the immunized serum by affinity chromatography (Protein A/G)
Suggested Dilutions	WB: 1:500~2000

## Anti-SAPS2 (PPP6R2) Rabbit Polyclonal Antibody (A12592-1) Images



HEK293T cells were transfected with the pCMV6-ENTRY control (Left lane) or pCMV6-ENTRY SAPS2 (PPP6R2) (Right lane) cDNA for 48 hrs and lysed. Equivalent amounts of cell lysates (5 ug per lane) were separated by SDS-PAGE and immunoblotted with ant.



Western blot analysis of extracts (35ug) from different cell lines and tissues by using anti-SAPS2 (PPP6R2) rabbit polyclonal antibody.

### Submit a product review to Biocompare.com

Submit a review of this product to Biocompare.com to receive a \$20 Amazon.com giftcard! Your reviews help your fellow scientists make the right decisions. Thank you for your contribution.



### Anti-SAPS2 (PPP6R2) Rabbit Polyclonal Antibody

For Research Use Only. Not for use in diagnostic procedures.