

Anti-Siglec11 Antibody

Catalog Number: A12601

About SIGLEC11

Siglecs are sialic acid-binding lectins of the immunoglobulin superfamily that are mainly expressed in cells of the hematopoietic system. Siglec11 is unlike other siglecs in that it binds specifically to alpha2-8-linked sialic acids and is not found in peripheral blood leukocytes but instead on macrophages of various tissues. Siglec11 is highly homologous to Siglec10 over their extracellular domain but not over their cytoplasmic domain, suggesting that Siglec11 arose through gene duplication followed by a recombination event involving another ancestral siglec gene. Following treatment of Siglec11-transfected cells with pervanadate, Siglec11 becomes tyrosine-phosphorylated and strongly associates with SHP-1 and SHP-2. At least five isoforms of Siglec11 are known to exist. Siglec11 antibody will not cross-react with Siglec10.

Overview

Product Name	Anti-Siglec11 Antibody
Reactive Species	Human
Description	Boster Bio Anti-Siglec11 Antibody (Catalog # A12601). Tested in ELISA, WB, IHC-P, IF applications. This antibody reacts with Human.
Application	ELISA, IF, IHC-P, WB
Clonality	Polyclonal
Formulation	Siglec11 Antibody is supplied in PBS containing 0.02% sodium azide.
Storage Instructions	Siglec11 antibody can be stored at 4°C for three months and -20°C, stable for up to one year. Avoid repeated freeze-thaw cycles. Antibodies should not be exposed to prolonged high temperatures.
Host	Rabbit
Uniprot ID	Q96RL6

Technical Details

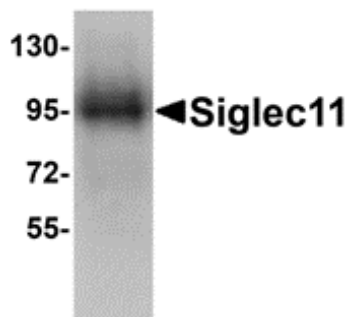
Immunogen	Siglec11 antibody was raised against an 18 amino acid synthetic peptide from near the carboxy terminus of human Siglec11. The immunogen is located within the last 50 amino acids of Siglec11.
Predicted Reactive Species	Bovine, Rat
Isotype	IgG
Form	Liquid
Concentration	1 mg/mL
Purification	Siglec11 Antibody is affinity chromatography purified via peptide column.

Suggested Dilutions

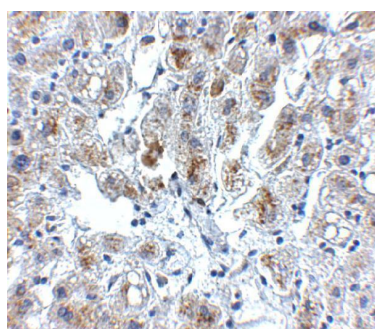
Siglec11 antibody can be used for detection of Siglec11 by Western blot at 1 ug/mL. Despite its predicted size, Siglec11 migrates at a higher than expected molecular weight in SDS-PAGE. Antibody can also be used for immunohistochemistry starting at 5 ug/mL. For immunofluorescence start at 20 ug/mL.

Antibody validated: Western Blot in human samples; Immunohistochemistry in human samples and Immunofluorescence in human samples. All other applications and species not yet tested. Optimal dilutions for each application should be determined by the researcher.

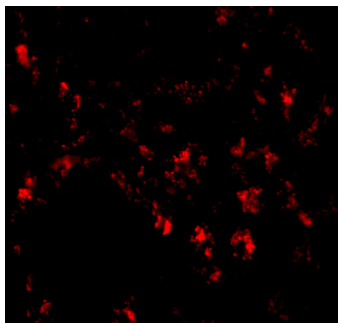
Anti-Siglec11 Antibody (A12601) Images



Western blot analysis of Siglec11 in HepG2 cell lysate with Siglec11 antibody at 1 ug/mL.



Immunohistochemistry of Siglec11 in human liver tissue with Siglec11 antibody at 5 ug/mL.



Immunofluorescence of SIGLEC11 in human liver tissue with SIGLEC11 antibody at 20 ug/mL.

Submit a product review to [Biocompare.com](https://www.biocompare.com)

Submit a review of this product to [Biocompare.com](https://www.biocompare.com) to receive a \$20 Amazon.com giftcard! Your reviews help your fellow scientists make the right decisions. Thank you for your contribution.



Anti-Siglec11 Antibody

For Research Use Only. Not for use in diagnostic procedures.