

Anti-AP-3 complex subunit mu-1 AP3M1 Antibody

Catalog Number: A12628

About AP3M1

The AP3 complex is a heterotetramer composed of two large adaptins (AP3D1, AP3B1 or AP3B2), a medium adaptin (AP3M1 or AP3M2) and a small adaptin (AP3S1 or AP3S2). The complex is associated with the Golgi region as well as more peripheral structures. It facilitates the budding of vesicles from the Golgi membrane and may be directly involved in trafficking to lysosomes. AP3M1 is highly homologous to AP3M2 but is the preferred binding partner to the YQRL motif from the cytosolic domain of TGN38. AP3M1 has also been shown to interact with the HIV-1 virulence protein Nef.

Overview

Product Name	Anti-AP-3 complex subunit mu-1 AP3M1 Antibody
Reactive Species	Human, Mouse, Rat
Description	Boster Bio Anti-AP-3 complex subunit mu-1 AP3M1 Antibody (Catalog # A12628). Tested in ELISA, WB, IHC-P, IF applications. This antibody reacts with Human, Mouse, Rat.
Application	ELISA, IF, IHC-P, WB
Clonality	Polyclonal
Formulation	AP3M1 Antibody is supplied in PBS containing 0.02% sodium azide.
Storage Instructions	AP3M1 antibody can be stored at 4°C for three months and -20°C, stable for up to one year. Avoid repeated freeze-thaw cycles. Antibodies should not be exposed to prolonged high temperatures.
Host	Rabbit
Uniprot ID	Q9Y2T2

Technical Details

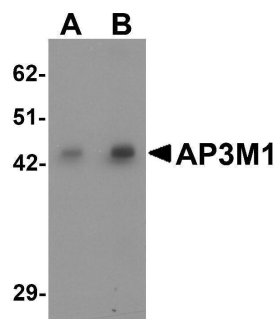
Immunogen	AP3M1 antibody was raised against a 15 amino acid synthetic peptide near the carboxy terminus of human AP3M1. The immunogen is located within amino acids 340 - 390 of AP3M1.
Predicted Reactive Species	Bovine, Chicken
Cross Reactivity	AP3M1 antibody may cross-react with AP3M2.
Isotype	IgG
Form	Liquid
Concentration	1 mg/mL
Purification	AP3M1 Antibody is affinity chromatography purified via peptide column.

Suggested Dilutions

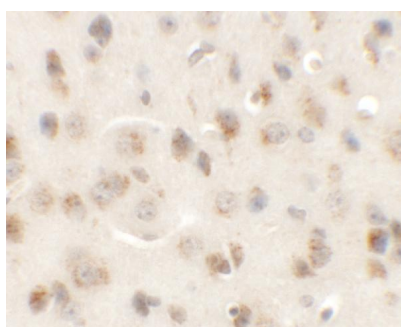
AP3M1 antibody can be used for detection of AP3M1 by Western blot at 1 - 2 ug/mL. Antibody can also be used for immunohistochemistry starting at 5 ug/mL. For immunofluorescence start at 20 ug/mL.

Antibody validated: Western Blot in human samples; Immunohistochemistry in mouse samples and Immunofluorescence in mouse samples. All other applications and species not yet tested. Optimal dilutions for each application should be determined by the researcher.

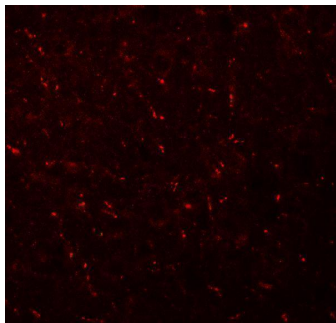
Anti-AP-3 complex subunit mu-1 AP3M1 Antibody (A12628) Images



Western blot analysis of AP3M1 in human brain tissue lysate with AP3M1 antibody at (A) 1 and (B) 2 ug/mL .



Immunohistochemistry of AP3M1 in mouse brain tissue with AP3M1 antibody at 5 ug/mL.



Immunofluorescence of AP3M1 in mouse brain tissue with AP3M1 antibody at 20 ug/mL.

Submit a product review to [Biocompare.com](https://www.biocompare.com)

Submit a review of this product to [Biocompare.com](https://www.biocompare.com) to receive a \$20 Amazon.com giftcard! Your reviews help your fellow scientists make the right decisions. Thank you for your contribution.



Anti-AP-3 complex subunit mu-1 AP3M1 Antibody

For Research Use Only. Not for use in diagnostic procedures.