

## Anti-CLEC14A Antibody

Catalog Number: A12642-2

### About CLEC14A

This gene encodes a member of the C-type lectin/C-type lectin-like domain (CTL/CTLD) superfamily. Members of this family share a common protein fold and have diverse functions, such as cell adhesion, cell-cell signalling, glycoprotein turnover, and roles in inflammation and immune response. This family member plays a role in cell-cell adhesion and angiogenesis. It functions in filopodia formation, cell migration and tube formation. Due to its presence at higher levels in tumor endothelium than in normal tissue endothelium, it is considered to be a candidate for tumor vascular targeting.

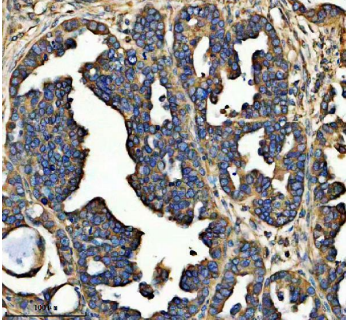
### Overview

Product Name	Anti-CLEC14A Antibody
Reactive Species	Human
Description	Boster Bio Anti-CLEC14A Antibody catalog # A12642-2. Tested in IHC, ELISA applications. This antibody reacts with Human.
Application	ELISA, IHC
Clonality	Polyclonal
Formulation	Each vial contains 4 mg Trehalose, 0.9 mg NaCl, 0.2 mg Na <sub>2</sub> HPO <sub>4</sub> .
Storage Instructions	At -20°C for one year from date of receipt. After reconstitution, at 4°C for one month. It can also be aliquotted and stored frozen at -20°C for six months. Avoid repeated freezing and thawing.
Host	Rabbit
Uniprot ID	Q86T13

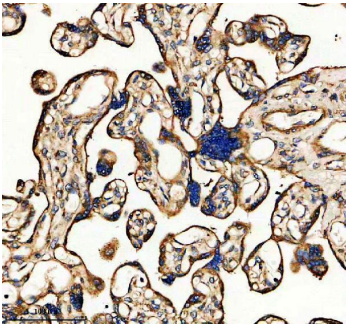
### Technical Details

Immunogen	E.coli-derived human CLEC14A recombinant protein (Position: E97-A368).
Form	Lyophilized
Concentration	Adding 0.2 ml of distilled water will yield a concentration of 500 ug/ml.
Purification	Immunogen affinity purified.
Suggested Dilutions	Immunohistochemistry(Paraffin-embedded Section), 2-5 ug/ml, Human ELISA, 0.1-0.5 ug/ml

## Anti-CLEC14A Antibody (A12642-2) Images



IHC analysis of CLEC14A using anti-CLEC14A antibody (A12642-2). CLEC14A was detected in a paraffin-embedded section of human ovarian cancer tissue. Heat mediated antigen retrieval was performed in EDTA buffer (pH 8.0, epitope retrieval solution). The tissue section was blocked with 10% goat serum. The tissue section was then incubated with 2 ug/ml rabbit anti-CLEC14A Antibody (A12642-2) overnight at 4°C. Peroxidase Conjugated Goat Anti-rabbit IgG was used as secondary antibody and incubated for 30 minutes at 37°C. The tissue section was developed using HRP Conjugated Rabbit IgG Super Vision Assay Kit (Catalog # SV0002) with DAB as the chromogen.



IHC analysis of CLEC14A using anti-CLEC14A antibody (A12642-2). CLEC14A was detected in a paraffin-embedded section of human placenta tissue. Heat mediated antigen retrieval was performed in EDTA buffer (pH 8.0, epitope retrieval solution). The tissue section was blocked with 10% goat serum. The tissue section was then incubated with 2 ug/ml rabbit anti-CLEC14A Antibody (A12642-2) overnight at 4°C. Peroxidase Conjugated Goat Anti-rabbit IgG was used as secondary antibody and incubated for 30 minutes at 37°C. The tissue section was developed using HRP Conjugated Rabbit IgG Super Vision Assay Kit (Catalog # SV0002) with DAB as the chromogen.

## Submit a product review to Biocompare.com

Submit a review of this product to Biocompare.com to receive a \$20 Amazon.com giftcard! Your reviews help your fellow scientists make the right decisions. Thank you for your contribution.



Anti-CLEC14A Antibody

For Research Use Only. Not for use in diagnostic procedures.