

Anti-RSRC1 Antibody

Catalog Number: A12655

About RSRC1

The arginine/serine-rich coiled-coil 1 protein (RSRC1) was initially identified as a non-snRNP splicing factor that has a role in both the constitutive and alternative splicing of pre-mRNA molecules. In cellular nuclear extracts immunodepleted of RSRC1, the second step of pre-mRNA splicing is blocked; recombinant RSRC1 is able to restore splicing activity. RSRC1 has also been reported to be associated with schizophrenia as well as a unique marker of bone marrow-derived stem cells that also express the cdc34 marker.

Overview

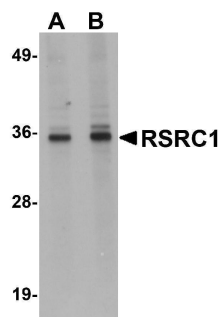
Product Name	Anti-RSRC1 Antibody
Reactive Species	Human, Mouse, Rat
Description	Boster Bio Anti-RSRC1 Antibody (Catalog # A12655). Tested in ELISA, WB, IHC-P, IF applications. This antibody reacts with Human, Mouse, Rat.
Application	ELISA, IF, IHC-P, WB
Clonality	Polyclonal
Formulation	RSRC1 Antibody is supplied in PBS containing 0.02% sodium azide.
Storage Instructions	RSRC1 antibody can be stored at 4°C for three months and -20°C, stable for up to one year. Avoid repeated freeze-thaw cycles. Antibodies should not be exposed to prolonged high temperatures.
Host	Rabbit
Uniprot ID	Q96IZ7

Technical Details

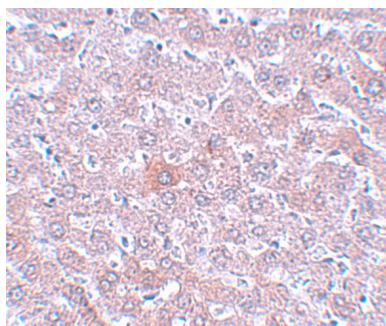
Immunogen	RSRC1 antibody was raised against a 19 amino acid synthetic peptide near the carboxy terminus of human RSRC1. The immunogen is located within the last 50 amino acids of RSRC1.
Predicted Reactive Species	Bovine
Isotype	IgG
Form	Liquid
Concentration	1 mg/mL
Purification	RSRC1 Antibody is affinity chromatography purified via peptide column.
Suggested Dilutions	RSRC1 antibody can be used for detection of RSRC1 by Western blot at 1 - 2 ug/mL. Antibody can also be used for immunohistochemistry starting at 5 ug/mL. For immunofluorescence start at 20 ug/mL.

Antibody validated: Western Blot in human samples; Immunohistochemistry in rat samples and Immunofluorescence in rat samples. All other applications and species not yet tested. Optimal dilutions for each application should be determined by the researcher.

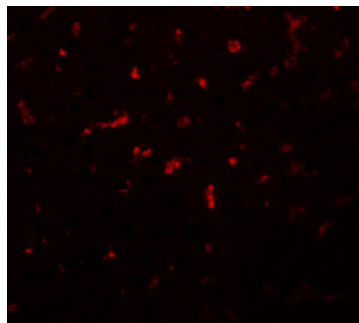
Anti-RSRC1 Antibody (A12655) Images



Western blot analysis of RSRC1 in HepG2 cell lysate with RSRC1 antibody at (A) 1 and (B) 2 ug/mL.



Immunohistochemistry of RSRC1 in rat liver tissue with RSRC1 antibody at 5 ug/mL.



Immunofluorescence of RSRC1 in rat liver tissue with RSRC1 antibody at 20 ug/mL.

Submit a product review to [Biocompare.com](https://www.biocompare.com)

Submit a review of this product to [Biocompare.com](https://www.biocompare.com) to receive a \$20 Amazon.com giftcard! Your reviews help your fellow scientists make the right decisions. Thank you for your contribution.



Anti-RSRC1 Antibody

For Research Use Only. Not for use in diagnostic procedures.