

Anti-EPN3 Antibody (N-term)

Catalog Number: A12667-1

About EPN3

EPN3 belongs to the epsin family.

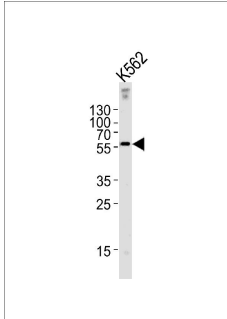
Overview

Product Name	Anti-EPN3 Antibody (N-term)
Reactive Species	Human
Description	Boster Bio Anti-EPN3 Antibody (N-term) (Catalog # A12667-1). Tested in WB, Flow Cytometry, IHC-P application(s). This antibody reacts with Human.
Application	Flow Cytometry, IHC-P, WB
Clonality	Polyclonal
Formulation	Purified polyclonal antibody supplied in PBS with 0.09% (W/V) sodium azide.
Storage Instructions	Maintain refrigerated at 2-8°C for up to 2 weeks. For long-term storage, store at -20°C in small aliquots to prevent freeze-thaw cycles.
Host	Rabbit
Uniprot ID	Q9H201

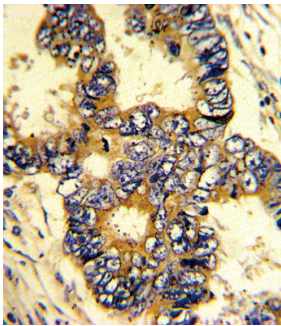
Technical Details

Immunogen	This EPN3 antibody is generated from rabbits immunized with a KLH conjugated synthetic peptide between 126-153 amino acids from the N-terminal region of human EPN3.
Predicted Reactive Species	Mouse, Rat
Isotype	Rabbit IgG
Purification	This antibody is prepared by Saturated Ammonium Sulfate (SAS) precipitation followed by dialysis against PBS.
Suggested Dilutions	<p>Dilute the sample so that the expected range of concentrations fall within the detection range of this kit.</p> <p>If the expected range of concentration is unknown, a pilot test should be conducted to decide the optimal dilution ratio for your samples.</p> <p>Some PubMed article(s) citing the expression level of this target are as follows:</p> <p>Boster Bio's internal QC testing used:</p> <p>WB: 1:1000 IHC-P: 1:10-1:50 FC: 1:10-1:50</p>

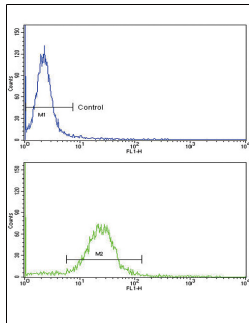
Anti-EPN3 Antibody (N-term) (A12667-1) Images



EPN3 Antibody (N-term) western blot analysis in K562 cell line lysates (35ug/lane). This demonstrates the EPN3 antibody detected the EPN3 protein (arrow).



Formalin-fixed and paraffin-embedded human colon carcinoma with EPN3 Antibody (N-term), which was peroxidase-conjugated to the secondary antibody, followed by DAB staining. This data demonstrates the use of this antibody for immunohistochemistry; clinical relevance has not been evaluated.



Flow cytometric analysis of MDA-231 cells using EPN3 Antibody (N-term) (bottom histogram) compared to a negative control cell (top histogram). FITC-conjugated goat-anti-rabbit secondary antibodies were used for the analysis.

Submit a product review to Biocompare.com

Submit a review of this product to Biocompare.com to receive a \$20 Amazon.com giftcard! Your reviews help your fellow scientists make the right decisions. Thank you for your contribution.



Anti-EPN3 Antibody (N-term)