

Anti-FOXRED2 Antibody

Catalog Number: A12703

About FOXRED2

FOXRED2, also known as ERFAD, is an endoplasmic reticulum (ER) luminal flavoprotein which may function in ER associated degradation (ERAD). It has been proposed to bind non-native proteins in the endoplasmic reticulum and target them to the ubiquitination machinery for subsequent degradation. Upon knockdown of FOXRED2, the degradation of the ERAD model substrate ribophorin 332 is delayed, and the overall level of polyubiquitinated cellular proteins is decreased. Defects in the related protein FOXRED1 are a cause of mitochondrial complex I deficiency (MT-C1D), suggesting the FOXRED2 may also play a role in MT-C1D.

Overview

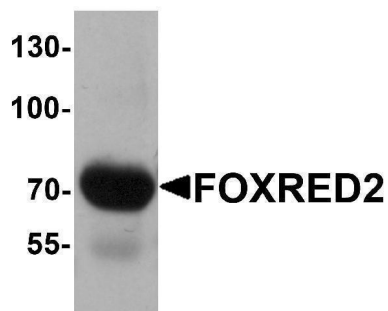
Product Name	Anti-FOXRED2 Antibody
Reactive Species	Human
Description	Boster Bio Anti-FOXRED2 Antibody (Catalog # A12703). Tested in ELISA, WB, IF applications. This antibody reacts with Human.
Application	ELISA, IF, WB
Clonality	Polyclonal
Formulation	FOXRED2 Antibody is supplied in PBS containing 0.02% sodium azide.
Storage Instructions	FOXRED2 antibody can be stored at 4°C for three months and -20°C, stable for up to one year. Avoid repeated freeze-thaw cycles. Antibodies should not be exposed to prolonged high temperatures.
Host	Rabbit
Uniprot ID	Q8IWF2

Technical Details

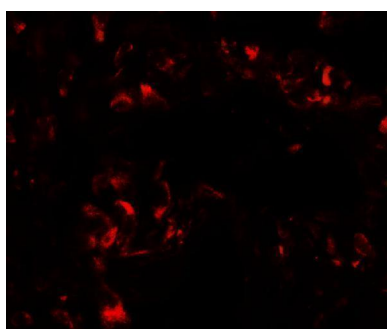
Immunogen	FOXRED2 antibody was raised against a 17 amino acid synthetic peptide near the amino terminus of human FOXRED2. The immunogen is located within amino acids 70 - 120 of FOXRED2.
Predicted Reactive Species	Mouse
Isotype	IgG
Form	Liquid
Concentration	1 mg/mL
Purification	FOXRED2 Antibody is affinity chromatography purified via peptide column.
Suggested Dilutions	FOXRED2 antibody can be used for detection of FOXRED2 by Western blot at 1 ug/mL. Antibody

can also be used for immunofluorescence starting at 20 ug/mL.
Antibody validated: Western Blot in human samples and Immunofluorescence in human samples. All other applications and species not yet tested. Optimal dilutions for each application should be determined by the researcher.

Anti-FOXRED2 Antibody (A12703) Images



Western blot analysis of FOXRED2 in human lung tissue lysate with FOXRED2 antibody at 1 ug/mL.



Immunofluorescence of FOXRED2 in human lung cells with FOXRED2 antibody at 20 ug/mL.

Submit a product review to [Biocompare.com](https://www.biocompare.com)

Submit a review of this product to [Biocompare.com](https://www.biocompare.com) to receive a \$20 Amazon.com giftcard! Your reviews help your fellow scientists make the right decisions. Thank you for your contribution.



Anti-FOXRED2 Antibody

For Research Use Only. Not for use in diagnostic procedures.