

## Anti-SCRAPPER FBXL20 Antibody

Catalog Number: A12714

### About FBXL20

Members of the F-box protein family, such as Scrapper, are characterized by an approximately 40-amino acid F-box motif. SCF complexes, formed by SKP1, cullin, and F-box proteins, act as protein-ubiquitin ligases. Scrapper is selectively expressed in the brain, broadly expressed within the mouse CNS and is abundant at presynaptic membrane. Scrapper has orthologs in *C. elegans*, *D. melanogaster*, and mammals which suggests that it might function as an important membrane-localized E3 ligase in various species. Scrapper is a major presynaptic E3 ubiquitin ligase that acts through RIM1a via degradation and the ubiquitin-proteasome-system (UPS) pathway to critically regulate synaptic transmission. This identifies protein degradation as a mechanism for holding synaptic communication in check.

### Overview

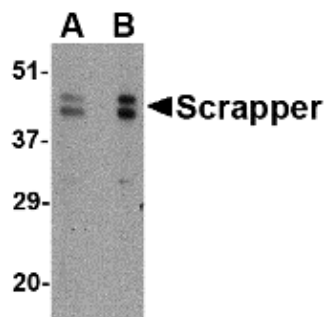
Product Name	Anti-SCRAPPER FBXL20 Antibody
Reactive Species	Human, Mouse, Rat
Description	Boster Bio Anti-SCRAPPER FBXL20 Antibody (Catalog # A12714). Tested in ELISA, WB, IHC-P applications. This antibody reacts with Human, Mouse, Rat.
Application	ELISA, IHC-P, WB
Clonality	Polyclonal
Formulation	SCRAPPER Antibody is supplied in PBS containing 0.02% sodium azide.
Storage Instructions	SCRAPPER antibody can be stored at 4°C for three months and -20°C, stable for up to one year. Avoid repeated freeze-thaw cycles. Antibodies should not be exposed to prolonged high temperatures.
Host	Rabbit
Uniprot ID	Q96IG2

### Technical Details

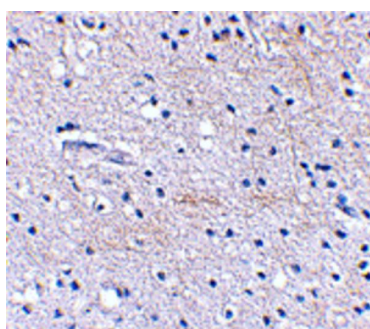
Immunogen	SCRAPPER antibody was raised against a 18 amino acid synthetic peptide near the carboxy terminus of the human SCRAPPER. The immunogen is located within the last 50 amino acids of SCRAPPER.
Predicted Reactive Species	Bovine
Cross Reactivity	AP3M1 antibody may cross-react with AP3M2.
Isotype	IgG
Form	Liquid
Concentration	1 mg/mL

Purification	SCRAPPER Antibody is affinity chromatography purified via peptide column.
Suggested Dilutions	<p>Dilute the sample so that the expected range of concentrations fall within the detection range of this kit.</p> <p>If the expected range of concentration is unknown, a pilot test should be conducted to decide the optimal dilution ratio for your samples.</p> <p>Some PubMed article(s) citing the expression level of this target are as follows:</p> <p>Boster Bio's internal QC testing used:</p> <p>SCRAPPER antibody can be used for detection of SCRAPPER by Western blot at 0.5 - 1 ug/mL.</p> <p>Antibody can also be used for immunohistochemistry starting at 2.5 ug/mL.</p> <p>Antibody validated: Western Blot in mouse samples and Immunohistochemistry in human samples.</p> <p>All other applications and species not yet tested. Optimal dilutions for each application should be determined by the researcher.</p>

## Anti-SCRAPPER FBXL20 Antibody (A12714) Images



Western blot analysis of SCRAPPER in A20 cell lysate with SCRAPPER antibody at (A) 0.5 and (B) 1 ug/mL.



Immunohistochemical staining of human brain tissue using Scrapper antibody at 2.5 ug/mL.

## Submit a product review to Biocompare.com

Submit a review of this product to Biocompare.com to receive a \$20 Amazon.com giftcard! Your reviews help your fellow scientists make the right decisions. Thank you for your contribution.



Anti-SCRAPPER FBXL20 Antibody