

Anti-POLR3F Antibody

Catalog Number: A12720

About POLR3F

The human POLR3F is a component of RNA III polymerase. RNA polymerase III transcribes many essential, small, noncoding RNAs, including the 5S rRNAs and tRNAs. While most pol III-transcribed genes are found scattered throughout the linear chromosome maps or in multiple linear clusters, there is increasing evidence that many of these genes prefer to be spatially clustered, often at or near the nucleolus. This association could create an environment that fosters the coregulation of transcription by pol III with transcription of the large ribosomal RNA repeats by RNA polymerase I (pol I) within the nucleolus. Given the high number of pol III-transcribed genes in all eukaryotic genomes, the spatial organization of these genes is likely to affect a large portion of the other genes in a genome. POLR3F has also been recently identified as an HIV dependency factor (HDF), suggesting that POLR3F may be an important drug target in HIV treatment. At least two isoforms of POLR3F are known to exist.

Overview

Product Name	Anti-POLR3F Antibody
Reactive Species	Human, Mouse, Rat
Description	Boster Bio Anti-POLR3F Antibody (Catalog # A12720). Tested in ELISA, WB, IHC-P, IF applications. This antibody reacts with Human, Mouse, Rat.
Application	ELISA, IF, IHC-P, WB
Clonality	Polyclonal
Formulation	POLR3F Antibody is supplied in PBS containing 0.02% sodium azide.
Storage Instructions	POLR3F antibody can be stored at 4°C for three months and -20°C, stable for up to one year. Avoid repeated freeze-thaw cycles. Antibodies should not be exposed to prolonged high temperatures.
Host	Rabbit
Uniprot ID	Q9H1D9

Technical Details

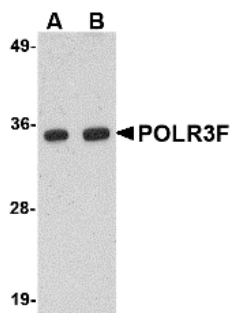
Immunogen	POLR3F antibody was raised against a 21 amino acid synthetic peptide from near the amino terminus of human POLR3F. The immunogen is located within the first 50 amino acids of POLR3F.
Predicted Reactive Species	Bovine
Isotype	IgG
Form	Liquid
Concentration	1 mg/mL
Purification	POLR3F Antibody is affinity chromatography purified via peptide column.

Suggested Dilutions

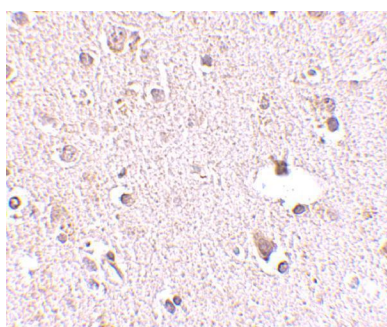
POLR3F antibody can be used for detection of POLR3F by Western blot at 0.5 - 1 ug/mL. Antibody can also be used for immunohistochemistry starting at 2.5 ug/mL. For immunofluorescence start at 20 ug/mL.

Antibody validated: Western Blot in human samples; Immunohistochemistry in human samples and Immunofluorescence in human samples. All other applications and species not yet tested. Optimal dilutions for each application should be determined by the researcher.

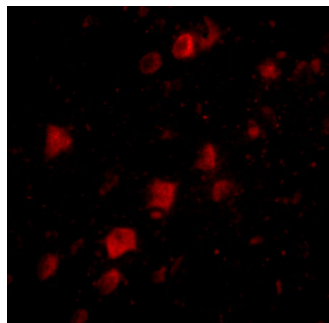
Anti-POLR3F Antibody (A12720) Images



Western blot analysis of POLR3F in human brain tissue lysate with POLR3F antibody at (A) 0.5 and (B) 1 ug/mL.



Immunohistochemistry of POLR3F in human brain tissue with POLR3F antibody at 2.5 ug/mL.



Immunofluorescence of POLR3F in human brain tissue with POLR3F antibody at 20 ug/mL.

Submit a product review to [Biocompare.com](https://www.biocompare.com)

Submit a review of this product to [Biocompare.com](https://www.biocompare.com) to receive a \$20 Amazon.com giftcard! Your reviews help your fellow scientists make the right decisions. Thank you for your contribution.



Anti-POLR3F Antibody

For Research Use Only. Not for use in diagnostic procedures.