

Anti-POLR3F Antibody Picoband®

Catalog Number: A12720-1

About POLR3F

DNA-directed RNA polymerase III subunit RPC6 is an enzyme that in humans is encoded by the POLR3F gene. The protein encoded by this gene is one of more than a dozen subunits forming eukaryotic RNA polymerase III (RNA Pol III), which transcribes 5S ribosomal RNA and tRNA genes. This protein has been shown to bind both TFIIB90 and TBP, two subunits of RNA polymerase III transcription initiation factor IIIB (TFIIIB). Unlike most of the other RNA Pol III subunits, the encoded protein is unique to this polymerase. Alternative splicing results in multiple transcript variants.

Overview

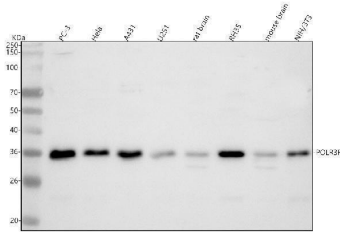
| | |
|----------------------|---|
| Product Name | Anti-POLR3F Antibody Picoband® |
| Reactive Species | Human, Mouse, Rat |
| Description | Boster Bio Anti-POLR3F Antibody Picoband® catalog # A12720-1. Tested in WB, ICC/IF, FCM, ELISA applications. This antibody reacts with Human, Mouse, Rat. The brand Picoband indicates this is a premium antibody that guarantees superior quality, high affinity, and strong signals with minimal background in Western blot applications. Only our best-performing antibodies are designated as Picoband, ensuring unmatched performance. |
| Application | ELISA, Flow Cytometry, IF, ICC, WB |
| Clonality | Polyclonal |
| Formulation | Each vial contains 4 mg Trehalose, 0.9 mg NaCl, 0.2 mg Na ₂ HPO ₄ . |
| Storage Instructions | At -20°C for one year from date of receipt. After reconstitution, at 4°C for one month. It can also be aliquotted and stored frozen at -20°C for six months. Avoid repeated freezing and thawing. |
| Host | Rabbit |
| Uniprot ID | Q9H1D9 |

Technical Details

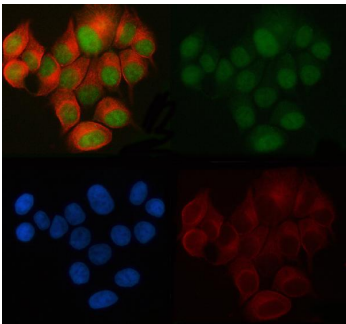
| | |
|-------------------------------|---|
| Immunogen | E.coli-derived human POLR3F recombinant protein (Position: K7-E312). Human POLR3F shares 98.7% amino acid (aa) sequence identity with mouse POLR3F. |
| Recommended Detection Systems | Boster recommends Enhanced Chemiluminescent Kit with anti-Rabbit IgG (EK1002) for Western blot, and HRP Conjugated anti-Rabbit IgG Super Vision Assay Kit (SV0002-1) for ICC. |
| Form | Lyophilized |
| Concentration | Adding 0.2 ml of distilled water will yield a concentration of 500 µg/ml. |
| Purification | Immunogen affinity purified. |
| Suggested Dilutions | Western blot, 0.25-0.5 µg/ml, Human, Mouse, Rat |

Immunocytochemistry/Immunofluorescence, 5 ug/ml, Human
Flow Cytometry (Fixed), 1-3 ug/1x10⁶ cells, Human
ELISA, 0.1-0.5 ug/ml, -

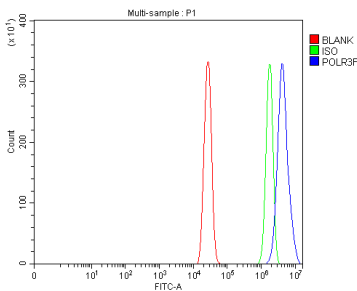
Anti-POLR3F Antibody Picoband® (A12720-1) Images



Western blot analysis of POLR3F using anti-POLR3F antibody (A12720-1). Electrophoresis was performed on a 5-20% SDS-PAGE gel at 70V (Stacking gel) / 90V (Resolving gel) for 2-3 hours. The sample well of each lane was loaded with 30 ug of sample under reducing conditions. Lane 1: human PC-3 whole cell lysates, Lane 2: human Hela whole cell lysates, Lane 3: human A431 whole cell lysates, Lane 4: human U251 whole cell lysates, Lane 5: rat brain tissue lysates, Lane 6: rat RH35 whole cell lysates, Lane 7: mouse brain tissue lysates, Lane 8: mouse NIH/3T3 whole cell lysates. After electrophoresis, proteins were transferred to a nitrocellulose membrane at 150 mA for 50-90 minutes. Blocked the membrane with 5% non-fat milk/TBS for 1.5 hour at RT. The membrane was incubated with rabbit anti-POLR3F antigen affinity purified polyclonal antibody (Catalog # A12720-1) at 0.5 ug/mL overnight at 4°C, then washed with TBS-0.1%Tween 3 times with 5 minutes each and probed with a goat anti-rabbit IgG-HRP secondary antibody at a dilution of 1:5000 for 1.5 hour at RT. The signal is developed using an Enhanced Chemiluminescent detection (ECL) kit (Catalog # EK1002) with Tanon 5200 system. A specific band was detected for POLR3F at approximately 36 kDa. The expected band size for POLR3F is at 36 kDa.



IF analysis of POLR3F using anti-POLR3F antibody (A12720-1) and anti-Beta Tubulin antibody (M01857-3). POLR3F was detected in immunocytochemical section of MCF-7 cell. Enzyme antigen retrieval was performed using IHC enzyme antigen retrieval reagent (AR0022) for 15 mins. The cells were blocked with 10% goat serum. And then incubated with 5 ug/mL rabbit anti-POLR3F Antibody (A12720-1) and mouse anti-Beta Tubulin antibody (M01857-3) overnight at 4°C. DyLight®488 Conjugated Goat Anti-Rabbit IgG (BA1127)(B) and DyLight®550 Conjugated Goat Anti-Mouse IgG (BA1133)(D) were used as secondary antibody at 1:500 dilution and incubated for 30 minutes at 37°C. The section was counterstained with DAPI(C). Visualize using a fluorescence microscope and filter sets appropriate for the label used.



Flow Cytometry analysis of A431 cells using anti-POLR3F antibody (A12720-1). Overlay histogram showing A431 cells stained with A12720-1 (Blue line). To facilitate intracellular staining, cells were fixed with 4% paraformaldehyde and permeabilized with permeabilization buffer. The cells were blocked with 10% normal goat serum. And then incubated with rabbit anti-POLR3F Antibody (A12720-1, 1 ug/1x10⁶ cells) for 30 min at 20°C. DyLight®488 conjugated goat anti-rabbit IgG (BA1127, 5-10 ug/1x10⁶ cells) was used as secondary antibody for 30 minutes at 20°C. Isotype control antibody (Green line) was rabbit IgG (1 ug/1x10⁶) used under the same conditions. Unlabelled sample (Red line) was also used as a control.

Submit a product review to Biocompare.com

Submit a review of this product to Biocompare.com to receive a \$20 Amazon.com giftcard! Your reviews help your fellow scientists make the right decisions. Thank you for your contribution.



Anti-POLR3F Antibody

For Research Use Only. Not for use in diagnostic procedures.