

Anti-LRFN5 Antibody

Catalog Number: A12727

About LRFN5

LRFN5 is one of a family of five transmembrane glycoproteins that are highly expressed in neuronal tissues. LRFN proteins share leucine-rich repeat (LRR)-immunoglobulin-like (Ig)-fibronectin type III (Fn)-transmembrane domain structure with other members of the LRR-Ig-Fn protein superfamily such as the Slitrk family of proteins. Expression of LRFN1, -3, and -4 mRNA was detected in embryonic neuronal cells, while LRFN2 and LRFN5 expression was primarily restricted to more mature cells. LRFN1, -2, and -4 bound to PDZ domains of postsynaptic PSD95, re-distributing PSD95 to the cell periphery. It has been suggested that the Lrfn proteins play a role in the developing and/or mature vertebrate nervous system.

Overview

Product Name	Anti-LRFN5 Antibody
Reactive Species	Human, Mouse, Rat
Description	Boster Bio Anti-LRFN5 Antibody (Catalog # A12727). Tested in ELISA, WB, IHC-P applications. This antibody reacts with Human, Mouse, Rat.
Application	ELISA, IHC-P, WB
Clonality	Polyclonal
Formulation	LRFN5 Antibody is supplied in PBS containing 0.02% sodium azide.
Storage Instructions	LRFN5 antibody can be stored at 4°C for three months and -20°C, stable for up to one year. Avoid repeated freeze-thaw cycles. Antibodies should not be exposed to prolonged high temperatures.
Host	Rabbit
Uniprot ID	Q96NI6

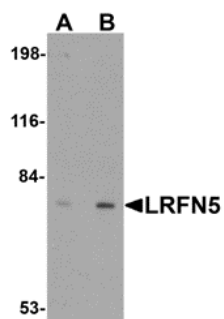
Technical Details

Immunogen	LRFN5 antibody was raised against a 16 amino acid synthetic peptide near the carboxy terminus of human LRFN5. The immunogen is located within amino acids 650 - 700 of LRFN5.
Predicted Reactive Species	Bovine
Cross Reactivity	At least two isoforms of LRFN5 are known to exist. This antibody is predicted to not cross-react with other members of the LRFN family.
Isotype	IgG
Form	Liquid
Concentration	1 mg/mL
Purification	LRFN5 Antibody is affinity chromatography purified via peptide column.

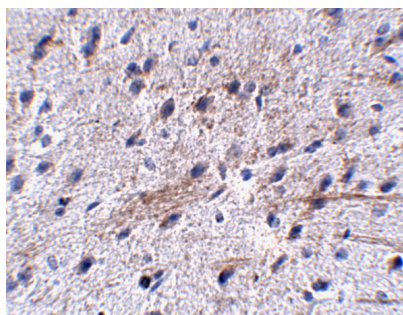
Suggested Dilutions

LRFN5 antibody can be used for detection of LRFN5 by Western blot at 0.5 - 1 ug/mL. Antibody can also be used for immunohistochemistry starting at 5 ug/mL.
Antibody validated: Western Blot in mouse samples and Immunohistochemistry in mouse samples. All other applications and species not yet tested. Optimal dilutions for each application should be determined by the researcher.

Anti-LRFN5 Antibody (A12727) Images



Western blot analysis of LRFN5 in EL4 cell lysate with LRFN5 antibody at (A) 0.5 and (B) 1 ug/mL.



Immunohistochemistry of LRFN5 in mouse brain tissue with LRFN5 antibody at 5 ug/mL.

Submit a product review to Biocompare.com

Submit a review of this product to Biocompare.com to receive a \$20 Amazon.com giftcard! Your reviews help your fellow scientists make the right decisions. Thank you for your contribution.



Anti-LRFN5 Antibody

For Research Use Only. Not for use in diagnostic procedures.