

Anti-Protein Shroom1 SHROOM1 Antibody

Catalog Number: A12817

About SHROOM1

SHROOM family members play diverse roles in the development of the nervous system and other tissues. SHROOM1 is a PDZ domain-containing actin-binding protein that is required for neural tube morphogenesis. It facilitates neurulation by regulating the morphology of neuroepithelial cells via the apical positioning of an actomyosin network in the neuroepithelium. SHROOM1 is also expressed in pulmonary arterial smooth muscle cells and its expression is significantly decreased in mouse and human models of pulmonary arterial hypertension, suggesting that there may be a link between SHROOM1 expression and pulmonary arterial hypertension.

Overview

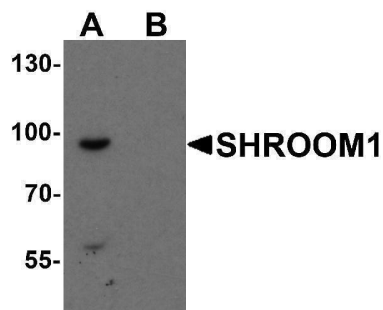
Product Name	Anti-Protein Shroom1 SHROOM1 Antibody
Reactive Species	Human, Mouse, Rat
Description	Boster Bio Anti-Protein Shroom1 SHROOM1 Antibody (Catalog # A12817). Tested in ELISA, WB applications. This antibody reacts with Human, Mouse, Rat.
Application	ELISA, WB
Clonality	Polyclonal
Formulation	SHROOM1 Antibody is supplied in PBS containing 0.02% sodium azide.
Storage Instructions	SHROOM1 antibody can be stored at 4°C for three months and -20°C, stable for up to one year. Avoid repeated freeze-thaw cycles. Antibodies should not be exposed to prolonged high temperatures.
Host	Rabbit
Uniprot ID	Q2M3G4

Technical Details

Immunogen	Rabbit polyclonal SHROOM1 antibody was raised against a 16 amino acid peptide near the carboxy terminus of human SHROOM1. The immunogen is located within the last 50 amino acids of SHROOM1.
Predicted Reactive Species	Bovine
Cross Reactivity	SHROOM1 antibody is human, mouse and rat reactive. At least three isoforms of SHROOM1 are known to exist; this antibody will detect only the two largest isoforms. SHROOM1 antibody is predicted to not cross-react with other SHROOM family members.
Isotype	IgG
Form	Liquid

Concentration	1 mg/mL
Purification	SHROOM1 Antibody is affinity chromatography purified via peptide column.
Suggested Dilutions	SHROOM1 antibody can be used for detection of SHROOM1 by Western blot at 1 - 2 ug/mL. Antibody validated: Western Blot in mouse samples. All other applications and species not yet tested. Optimal dilutions for each application should be determined by the researcher.

Anti-Protein Shroom1 SHROOM1 Antibody (A12817) Images



Western blot analysis of SHROOM1 in mouse heart tissue lysate with SHROOM1 antibody at 1 ug/mL in (A) the absence and (B) the presence of blocking peptide.

Submit a product review to Biocompare.com

Submit a review of this product to Biocompare.com to receive a \$20 Amazon.com giftcard! Your reviews help your fellow scientists make the right decisions. Thank you for your contribution.



Anti-Protein Shroom1 SHROOM1 Antibody

For Research Use Only. Not for use in diagnostic procedures.