

Anti-SHROOM1 Antibody Picoband®

Catalog Number: A12817-1

About SHROOM1

SHROOM family members play diverse roles in the development of the nervous system and other tissues. SHROOM1 is a PDZ domain-containing actin-binding protein that is required for neural tube morphogenesis. It facilitates neurulation by regulating the morphology of neuroepithelial cells via the apical positioning of an actomyosin network in the neuroepithelium. SHROOM1 is also expressed in pulmonary arterial smooth muscle cells and its expression is significantly decreased in mouse and human models of pulmonary arterial hypertension, suggesting that there may be a link between SHROOM1 expression and pulmonary arterial hypertension.

Overview

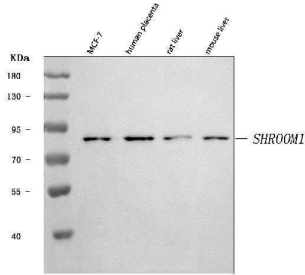
Product Name	Anti-SHROOM1 Antibody Picoband®
Reactive Species	Human, Mouse, Rat
Description	Boster Bio Anti-SHROOM1 Antibody Picoband® catalog # A12817-1. Tested in ELISA, WB applications. This antibody reacts with Human, Mouse, Rat. The brand Picoband indicates this is a premium antibody that guarantees superior quality, high affinity, and strong signals with minimal background in Western blot applications. Only our best-performing antibodies are designated as Picoband, ensuring unmatched performance.
Application	ELISA, WB
Clonality	Polyclonal
Formulation	Each vial contains 4 mg Trehalose, 0.9 mg NaCl, 0.2 mg Na ₂ HPO ₄ .
Storage Instructions	At -20°C for one year from date of receipt. After reconstitution, at 4°C for one month. It can also be aliquotted and stored frozen at -20°C for six months. Avoid repeated freezing and thawing.
Host	Rabbit
Uniprot ID	Q2M3G4

Technical Details

Immunogen	E.coli-derived human SHROOM1 recombinant protein (Position: R371-D807).
Recommended Detection Systems	Boster recommends Enhanced Chemiluminescent Kit with anti-Rabbit IgG (EK1002) for Western blot.
Cross Reactivity	No cross-reactivity with other proteins.
Isotype	Rabbit IgG
Form	Lyophilized
Concentration	Adding 0.2 ml of distilled water will yield a concentration of 500 µg/ml.

Purification	Immunogen affinity purified.
Suggested Dilutions	Western blot, 0.25-0.5 ug/ml, Human, Mouse, Rat ELISA, 0.1-0.5 ug/ml, -

Anti-SHROOM1 Antibody Picoband® (A12817-1) Images



Western blot analysis of SHROOM1 using anti-SHROOM1 antibody (A12817-1). Electrophoresis was performed on a 5-20% SDS-PAGE gel at 70V (Stacking gel) / 90V (Resolving gel) for 2-3 hours. The sample well of each lane was loaded with 30 ug of sample under reducing conditions. Lane 1: human MCF-7 whole cell lysates, Lane 2: human placenta tissue lysates, Lane 3: rat liver tissue lysates, Lane 4: mouse liver tissue lysates. After electrophoresis, proteins were transferred to a nitrocellulose membrane at 150 mA for 50-90 minutes. Blocked the membrane with 5% non-fat milk/TBS for 1.5 hour at RT. The membrane was incubated with rabbit anti-SHROOM1 antigen affinity purified polyclonal antibody (Catalog # A12817-1) at 0.5 ug/mL overnight at 4°C, then washed with TBS-0.1%Tween 3 times with 5 minutes each and probed with a goat anti-rabbit IgG-HRP secondary antibody at a dilution of 1:5000 for 1.5 hour at RT. The signal is developed using an Enhanced Chemiluminescent detection (ECL) kit (Catalog # EK1002) with Tanon 5200 system. A specific band was detected for SHROOM1 at approximately 91 kDa. The expected band size for SHROOM1 is at 91 kDa.

Submit a product review to Biocompare.com

Submit a review of this product to Biocompare.com to receive a \$20 Amazon.com giftcard! Your reviews help your fellow scientists make the right decisions. Thank you for your contribution.



Anti-SHROOM1 Antibody

For Research Use Only. Not for use in diagnostic procedures.