

Anti-ASCC2 Antibody

Catalog Number: A12860

Overview

Product Name	Anti-ASCC2 Antibody
Reactive Species	Human, Mouse, Rat
Description	Boster Bio Anti-ASCC2 Antibody catalog # A12860. Tested in WB,IHC applications. This antibody reacts with Human,Mouse,Rat.
Application	IHC, WB
Clonality	Polyclonal
Formulation	Rabbit IgG, 1mg/ml in PBS with 0.02% sodium azide, 50% glycerol, pH7.2
Storage Instructions	Store at -20°C for one year. For short term storage and frequent use, store at 4°C for up to one month. Avoid repeated freeze-thaw cycles.
Host	Rabbit
Uniprot ID	Q9H1I8

Technical Details

Immunogen	Synthesized peptide derived from human DDX55
Isotype	IgG
Form	Liquid
Concentration	1 mg/ml
Purification	The antibody was affinity-purified from rabbit antiserum by affinity-chromatography using epitope-specific immunogen and the purity is > 95% (by SDS-PAGE).
Suggested Dilutions	Dilute the sample so that the expected range of concentrations fall within the detection range of this kit. If the expected range of concentration is unknown, a pilot test should be conducted to decide the optimal dilution ratio for your samples. Some PubMed article(s) citing the expression level of this target are as follows: Boster Bio's internal QC testing used: WB: 1:500-1:2000 IHC: 1:50-1:100

Anti-ASCC2 Antibody (A12860) Images

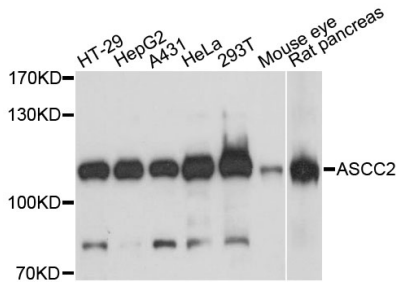


Figure 1. Western blotting validation for Anti-ASCC2 Antibody A12860

Western blot analysis of extracts of various cell lines

Submit a product review to Biocompare.com

Submit a review of this product to Biocompare.com to receive a \$20 Amazon.com giftcard! Your reviews help your fellow scientists make the right decisions. Thank you for your contribution.



Anti-ASCC2 Antibody