

Anti-Synaptotagmin-like protein 5 SYTL5 Antibody

Catalog Number: A12927

About SYTL5

SYTL5 belongs to the synaptotagmin-like (Slp) protein family, which contains a unique Slp homolog domain (SHD) at the N-terminus. The SHD functions as a binding site for Rab27A, which plays a role in protein transport. Expression of SYTL5 is restricted to placenta and liver, suggesting that it might be involved in Rab27A-dependent membrane trafficking in specific tissues. Several members of the synaptotagmin family are calcium-sensing vesicle-fusion proteins as mediators of cell migration. SYTL7 & SYTL5 were positive regulators of chemotaxis, whereas SYTL2 was a negative regulator of chemotaxis.

Overview

Product Name	Anti-Synaptotagmin-like protein 5 SYTL5 Antibody
Reactive Species	Human, Mouse, Rat
Description	Boster Bio Anti-Synaptotagmin-like protein 5 SYTL5 Antibody (Catalog # A12927). Tested in ELISA, WB, IHC-P applications. This antibody reacts with Human, Mouse, Rat.
Application	ELISA, IHC-P, WB
Clonality	Polyclonal
Formulation	SYTL5 Antibody is supplied in PBS containing 0.02% sodium azide.
Storage Instructions	SYTL5 antibody can be stored at 4°C for three months and -20°C, stable for up to one year. Avoid repeated freeze-thaw cycles. Antibodies should not be exposed to prolonged high temperatures.
Host	Rabbit
Uniprot ID	Q8TDW5

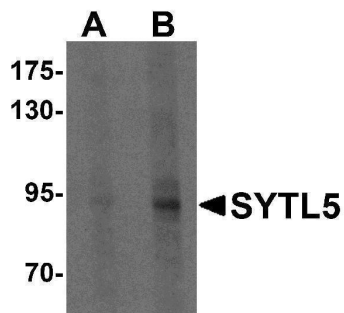
Technical Details

Immunogen	SYTL5 antibody was raised against a 17 amino acid synthetic peptide near the amino terminus of human SYTL5. The immunogen is located within amino acids 30 - 80 of SYTL5.
Predicted Reactive Species	Bovine
Cross Reactivity	Multiple isoforms of SYTL5 are known to exist. SYTL5 antibody is predicted to not cross-react with other SYTL protein family members.
Isotype	IgG
Form	Liquid
Concentration	1 mg/mL
Purification	SYTL5 Antibody is affinity chromatography purified via peptide column.

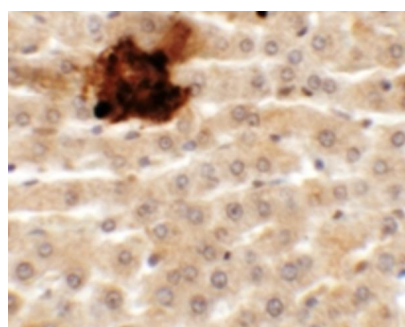
Suggested Dilutions

SYTL5 antibody can be used for detection of SYTL5 by Western blot at 1 - 2 ug/mL. Antibody can also be used for immunohistochemistry starting at 5 ug/mL.
Antibody validated: Western Blot in human samples and Immunohistochemistry in rat samples. All other applications and species not yet tested. Optimal dilutions for each application should be determined by the researcher.

Anti-Synaptotagmin-like protein 5 SYTL5 Antibody (A12927) Images



Western blot analysis of SYTL5 in HeLa cell lysate with SYTL5 antibody at (A) 1 and (B) 2 ug/mL .



Immunohistochemistry of SYTL5 in rat liver tissue with SYTL5 antibody at 5 ug/mL.

Submit a product review to [Biocompare.com](https://www.biocompare.com)

Submit a review of this product to [Biocompare.com](https://www.biocompare.com) to receive a \$20 Amazon.com giftcard! Your reviews help your fellow scientists make the right decisions. Thank you for your contribution.



Anti-Synaptotagmin-like protein 5 SYTL5 Antibody

For Research Use Only. Not for use in diagnostic procedures.