

Anti-Transmembrane protein 88 TMEM88 Antibody

Catalog Number: A12951

About TMEM88

Transmembrane protein 88 (TMEM88) is a two-transmembrane-type protein whose C-terminal tail has been shown to bind the PDZ domain of Dishevelled (Dvl), one of the key components in Wnt signaling pathways. TMEM88 attenuated the Wnt/beta-catenin signaling induced by Wnt-1 ligand in a dose-dependent manner and knockdown of TMEM88 by RNAi increased Wnt activity, suggesting that TMEM88 plays a role in regulating Wnt signaling in a context-dependent manner.

Overview

Product Name	Anti-Transmembrane protein 88 TMEM88 Antibody
Reactive Species	Human, Mouse, Rat
Description	Boster Bio Anti-Transmembrane protein 88 TMEM88 Antibody (Catalog # A12951). Tested in ELISA, WB, IHC-P, IF applications. This antibody reacts with Human, Mouse, Rat.
Application	ELISA, IF, IHC-P, WB
Clonality	Polyclonal
Formulation	TMEM88 Antibody is supplied in PBS containing 0.02% sodium azide.
Storage Instructions	TMEM88 antibody can be stored at 4°C for three months and -20°C, stable for up to one year. Avoid repeated freeze-thaw cycles. Antibodies should not be exposed to prolonged high temperatures.
Host	Rabbit
Uniprot ID	Q6PEY1

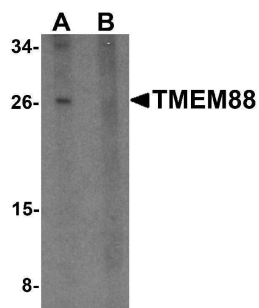
Technical Details

Immunogen	TMEM88 antibody was raised against a 19 amino acid synthetic peptide near the carboxy terminus of human TMEM88. The immunogen is located within amino acids 110 - 160 of TMEM88.
Predicted Reactive Species	Bovine
Cross Reactivity	At least two isoforms of TMEM88 are known to exist; this antibody will recognize both isoforms.
Isotype	IgG
Form	Liquid
Concentration	1 mg/mL
Purification	TMEM88 Antibody is affinity chromatography purified via peptide column.
Suggested Dilutions	TMEM88 antibody can be used for detection of TMEM88 by Western blot at 1 ug/mL. Antibody can

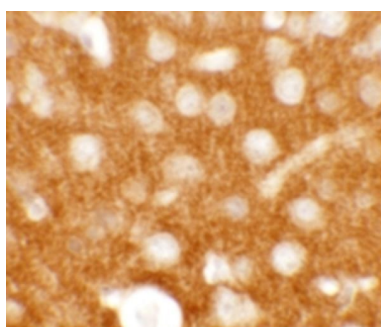
also be used for immunohistochemistry starting at 2.5 ug/mL. For immunofluorescence start at 20 ug/mL.

Antibody validated: Western Blot in human samples; Immunohistochemistry in mouse samples and Immunofluorescence in mouse samples. All other applications and species not yet tested. Optimal dilutions for each application should be determined by the researcher.

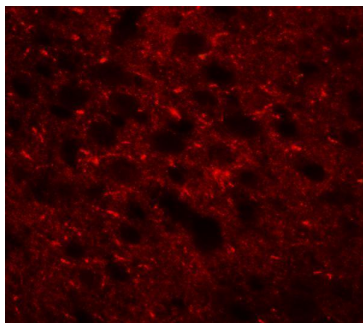
Anti-Transmembrane protein 88 TMEM88 Antibody (A12951) Images



Western blot analysis of TMEM88 in human brain tissue lysate with TMEM88 antibody at 1 ug/mL in (A) the absence and (B) the presence of blocking peptide.



Immunohistochemistry of TMEM88 in mouse brain tissue with TMEM88 antibody at 2.5 ug/mL.



Immunofluorescence of TMEM88 in mouse brain tissue with TMEM88 antibody at 20 ug/mL.

Submit a product review to [Biocompare.com](https://www.biocompare.com)

Submit a review of this product to [Biocompare.com](https://www.biocompare.com) to receive a \$20 Amazon.com giftcard! Your reviews help your fellow scientists make the right decisions. Thank you for your contribution.



Anti-Transmembrane protein 88 TMEM88 Antibody

For Research Use Only. Not for use in diagnostic procedures.