

Anti-PHF15/JADE2 Antibody Picoband®

Catalog Number: A12993-1

About JADE2

PHF15, also known as Protein Jade-2, has 3 isoforms, a 790 amino acid isoform that is 87 kDa, a 789 amino acid isoform that is 87 kDa and a 562 amino acid isoform that is 63 kDa, has a histone H4-specific acetyltransferase activity as a component of the HBO1 complex, a reduced activity toward histone H3 and is responsible for the bulk of histone H4 acetylation in vivo. This protein has been shown an interaction with ING4, KAT7, ING5, PACSIN, ZBTB3, ZBTB5, ZNF496, and VHL proteins in histone H3 acetylation, histone H4-K5 acetylation, histone H4-K8 acetylation, and histone H4-K12 acetylation biological processes.

Overview

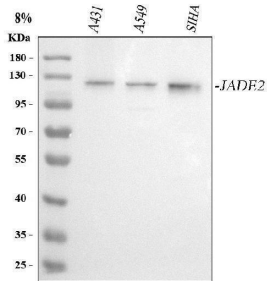
Product Name	Anti-PHF15/JADE2 Antibody Picoband®
Reactive Species	Human
Description	Boster Bio Anti-PHF15/JADE2 Antibody Picoband® catalog # A12993-1. Tested in ELISA, WB applications. This antibody reacts with Human. The brand Picoband indicates this is a premium antibody that guarantees superior quality, high affinity, and strong signals with minimal background in Western blot applications. Only our best-performing antibodies are designated as Picoband, ensuring unmatched performance.
Application	ELISA, WB
Clonality	Polyclonal
Formulation	Each vial contains 4 mg Trehalose, 0.9 mg NaCl, 0.2 mg Na ₂ HPO ₄ .
Storage Instructions	At -20°C for one year from date of receipt. After reconstitution, at 4°C for one month. It can also be aliquotted and stored frozen at -20°C for six months. Avoid repeated freezing and thawing.
Host	Rabbit
Uniprot ID	Q9NQC1

Technical Details

Immunogen	E.coli-derived human PHF15/JADE2 recombinant protein (Position: L397-D746). Human JADE2 shares 88% amino acid (aa) sequence identity with mouse JADE2.
Recommended Detection Systems	Boster recommends Enhanced Chemiluminescent Kit with anti-Rabbit IgG (EK1002) for Western blot.
Cross Reactivity	No cross reactivity with other proteins.
Isotype	IgG
Form	Lyophilized

Concentration	Adding 0.2 ml of distilled water will yield a concentration of 500 µg/ml.
Purification	Immunogen affinity purified.
Suggested Dilutions	Western blot, 0.25-0.5 ug/ml, Human ELISA, 0.1-0.5 ug/ml, -

Anti-PHF15/JADE2 Antibody Picoband® (A12993-1) Images



Western blot analysis of PHF15/JADE2 using anti-PHF15/JADE2 antibody (A12993-1). Electrophoresis was performed on a 5-20% SDS-PAGE gel at 70V (Stacking gel) / 90V (Resolving gel) for 2-3 hours. The sample well of each lane was loaded with 30 ug of sample under reducing conditions. Lane 1: human A431 whole cell lysates, Lane 2: human A549 whole cell lysates, Lane 3: human SiHa whole cell lysates. After electrophoresis, proteins were transferred to a nitrocellulose membrane at 150 mA for 50-90 minutes. Blocked the membrane with 5% non-fat milk/TBS for 1.5 hour at RT. The membrane was incubated with rabbit anti-PHF15/JADE2 antigen affinity purified polyclonal antibody (Catalog # A12993-1) at 0.5 ug/mL overnight at 4°C, then washed with TBS-0.1%Tween 3 times with 5 minutes each and probed with a goat anti-rabbit IgG-HRP secondary antibody at a dilution of 1:5000 for 1.5 hour at RT. The signal is developed using an Enhanced Chemiluminescent detection (ECL) kit (Catalog # EK1002) with Tanon 5200 system. A specific band was detected for PHF15/JADE2 at approximately 120 kDa. The expected band size for PHF15/JADE2 is at 87 kDa.

Submit a product review to [Biocompare.com](https://www.biocompare.com)

Submit a review of this product to [Biocompare.com](https://www.biocompare.com) to receive a \$20 Amazon.com giftcard! Your reviews help your fellow scientists make the right decisions. Thank you for your contribution.



Anti-PHF15/JADE2 Antibody

For Research Use Only. Not for use in diagnostic procedures.