

Anti-HSPB1-associated protein 1 HSPBAP1 Antibody

Catalog Number: A13002-2

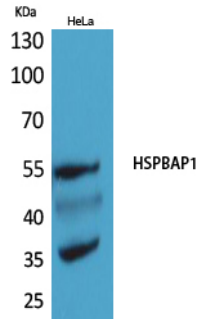
Overview

Product Name	Anti-HSPB1-associated protein 1 HSPBAP1 Antibody
Reactive Species	Human, Mouse, Rat
Description	Boster Bio Anti-HSPB1-associated protein 1 HSPBAP1 Antibody catalog # A13002-2. Tested in ELISA, IHC, WB applications. This antibody reacts with Human.
Application	ELISA, IF, IHC, WB
Clonality	Polyclonal
Formulation	Liquid in PBS containing 50% glycerol, 0.5% stabilizing protein and 0.02% sodium azide. This antibody is supplied in a stabilized formulation. Compatibility with conjugation reactions depends on the chemistry of the conjugation method used. For conjugation methods that are not compatible with the stabilizing components present in this formulation, a carrier-free antibody format is required.
Storage Instructions	Store at -20°C for one year. For short term storage and frequent use, store at 4°C for up to one month. Avoid repeated freeze-thaw cycles.
Host	Rabbit
Uniprot ID	Q96EW2

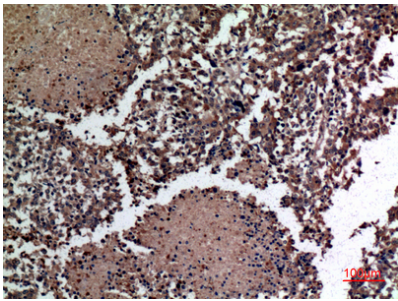
Technical Details

Immunogen	The antiserum was produced against synthesized peptide derived from the Internal region of human HSPBAP1. AA range:321-370
Isotype	IgG
Form	Liquid
Concentration	1 mg/ml
Purification	The antibody was affinity-purified from rabbit antiserum by affinity-chromatography using epitope-specific immunogen.
Suggested Dilutions	WB 1:500-1:2000 IHC: 1:100-300 ELISA 1:20000 IF 1:50-200

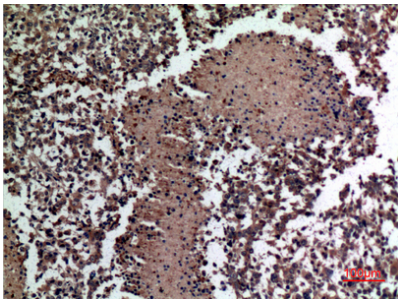
Anti-HSPB1-associated protein 1 HSPBAP1 Antibody (A13002-2) Images



Western blotting validation for Anti-HSPB1-associated protein 1 HSPBAP1 Antibody A13002-2 Western Blot (WB) analysis of HeLa cells using HSPBAP1 polyclonal antibody. Electrophoresis was performed on a SDS-PAGE gel. To determine SDS-PAGE gel concentration



Immunohistochemistry validation of HSPBAP1 using Anti-HSPB1-associated protein 1 HSPBAP1 Antibody (A13002-2). Immunohistochemistry (IHC) analysis of paraffin-embedded human lung cancer



Immunohistochemistry validation of HSPBAP1 using Anti-HSPB1-associated protein 1 HSPBAP1 Antibody (A13002-2). Immunohistochemistry (IHC) analysis of paraffin-embedded human lung cancer

Submit a product review to [Biocompare.com](https://www.biocompare.com)

Submit a review of this product to [Biocompare.com](https://www.biocompare.com) to receive a \$20 Amazon.com giftcard! Your reviews help your fellow scientists make the right decisions. Thank you for your contribution.



Anti-HSPB1-associated protein 1 HSPBAP1 Antibody

For Research Use Only. Not for use in diagnostic procedures.