

Anti-eIF4E3 Antibody

Catalog Number: A13024

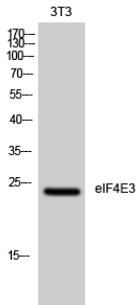
Overview

Product Name	Anti-eIF4E3 Antibody
Reactive Species	Human, Mouse, Rat
Description	Boster Bio Anti-eIF4E3 Antibody catalog # A13024. Tested in WB, ELISA applications. This antibody reacts with Human, Mouse, Rat.
Application	ELISA, WB
Clonality	Polyclonal
Formulation	Liquid in PBS containing 50% glycerol, 0.5% stabilizing protein and 0.02% sodium azide. This antibody is supplied in a stabilized formulation. Compatibility with conjugation reactions depends on the chemistry of the conjugation method used. For conjugation methods that are not compatible with the stabilizing components present in this formulation, a carrier-free antibody format is required.
Storage Instructions	Store at -20°C for one year. For short term storage and frequent use, store at 4°C for up to one month. Avoid repeated freeze-thaw cycles.
Host	Rabbit
Uniprot ID	Q8N5X7

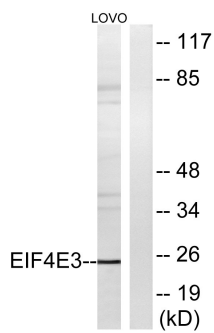
Technical Details

Immunogen	The antiserum was produced against synthesized peptide derived from human EIF4E3. AA range:141-190
Isotype	IgG
Form	Liquid
Concentration	1 mg/ml
Purification	Immunogen affinity purified
Suggested Dilutions	WB 1:500-1:2000 ELISA 1:10000

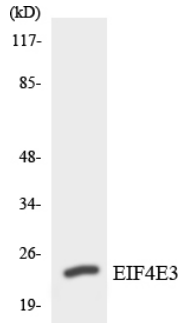
Anti-eIF4E3 Antibody (A13024) Images



Western Blot analysis of 3T3 cells using eIF4E3 Polyclonal Antibody diluted at 1:1000



Western blot analysis of lysates from LOVO cells, using EIF4E3 Antibody. The lane on the right is blocked with the synthesized peptide.



Western blot analysis of the lysates from HepG2 cells using EIF4E3 antibody.

Submit a product review to Biocompare.com

Submit a review of this product to Biocompare.com to receive a \$20 Amazon.com giftcard! Your reviews help your fellow scientists make the right decisions. Thank you for your contribution.



Anti-eIF4E3 Antibody

For Research Use Only. Not for use in diagnostic procedures.