

Anti-MARVELD1 Antibody

Catalog Number: A13025

About MARVELD1

MARVELD1, (MARVEL domain-containing 1), is one of the MARVEL (MAL and related proteins for vesicle trafficking and membrane link) domain-containing proteins. It is a nuclear-localized protein that is widely expressed in normal human tissues. While it has been reported to be overexpressed in colon cancer, MARVELD1 protein levels are generally lower in several primary tumors including ovary, breast, kidney, bladder and liver. This lower level of MARVELD1 expression in tumors is thought to be due to a higher methylation status of the MARVELD1 promoter as treatment of MDA-MB-361 with 5-aza-2'-deoxycytidine restores MARVELD1 expression, suggesting that loss of MARVELD1 expression may contribute to tumorigenicity.

Overview

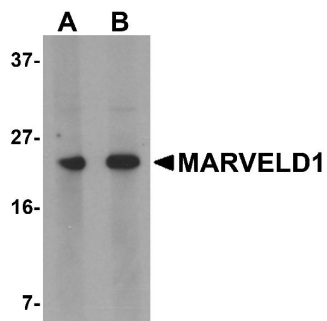
Product Name	Anti-MARVELD1 Antibody
Reactive Species	Human, Mouse, Rat
Description	Boster Bio Anti-MARVELD1 Antibody (Catalog # A13025). Tested in ELISA, WB applications. This antibody reacts with Human, Mouse, Rat.
Application	ELISA, WB
Clonality	Polyclonal
Formulation	MARVELD1 Antibody is supplied in PBS containing 0.02% sodium azide.
Storage Instructions	MARVELD1 antibody can be stored at 4°C for three months and -20°C, stable for up to one year. Avoid repeated freeze-thaw cycles. Antibodies should not be exposed to prolonged high temperatures.
Host	Rabbit
Uniprot ID	Q9BSK0

Technical Details

Immunogen	MARVELD1 antibody was raised against a 16 amino acid synthetic peptide from near the amino terminus of human MARVELD1. The immunogen is located within the first 50 amino acids of MARVELD1.
Predicted Reactive Species	Bovine
Cross Reactivity	GBP6 antibody is predicted to not cross-react with other GBP family members.
Isotype	IgG
Form	Liquid

Concentration	1 mg/mL
Purification	MARVELD1 Antibody is affinity chromatography purified via peptide column.
Suggested Dilutions	MARVELD1 antibody can be used for detection of MARVELD1 by Western blot at 1 - 2 ug/mL. Antibody validated: Western Blot in mouse samples. All other applications and species not yet tested. Optimal dilutions for each application should be determined by the researcher.

Anti-MARVELD1 Antibody (A13025) Images



Western blot analysis of MARVELD1 in mouse heart tissue lysate with MARVELD1 antibody at (A) 1 and (B) 2 ug/mL.

Submit a product review to Biocompare.com

Submit a review of this product to Biocompare.com to receive a \$20 Amazon.com giftcard! Your reviews help your fellow scientists make the right decisions. Thank you for your contribution.



Anti-MARVELD1 Antibody