

Anti-Protein SOGA1 SOGA1 Antibody

Catalog Number: A13046

About SOGA1

The recently identified protein suppressor of glucose by autophagy protein 1 (SOGA1) has been found to be involved in the regulation of autophagy (1). SOGA1 is thought to contribute to adiponectin-mediated insulin-dependent inhibition of autophagy during the activation of adenosine monophosphate kinase (AMPK) (1,2). SOGA1 contains an internal signal peptide that enables the secretion of a circulating fragment of SOGA1, providing a surrogate marker for intracellular SOGA1 levels (2). Knockdown of SOGA1 elevated glucose production in primary hepatocytes indicates that SOGA1 is an inhibitor of glucose production. It thus might be useful as a novel therapeutic target for diabetes (3).

Overview

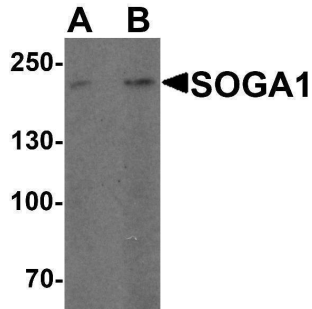
Product Name	Anti-Protein SOGA1 SOGA1 Antibody
Reactive Species	Human
Description	Boster Bio Anti-Protein SOGA1 SOGA1 Antibody (Catalog # A13046). Tested in ELISA, WB, IF applications. This antibody reacts with Human.
Application	ELISA, IF, WB
Clonality	Polyclonal
Formulation	SOGA1 Antibody is supplied in PBS containing 0.02% sodium azide.
Storage Instructions	SOGA1 antibody can be stored at 4°C for three months and -20°C, stable for up to one year.
Host	Rabbit
Uniprot ID	O94964

Technical Details

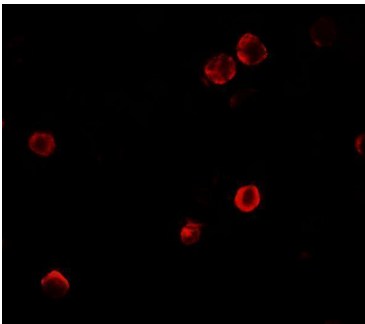
Immunogen	SOGA1 antibody was raised against a 16 amino acid peptide near the carboxy terminus of human SOGA. The immunogen is located within the last 50 amino acids of SOGA1 .
Predicted Reactive Species	Mouse
Cross Reactivity	SOGA1 antibody is human specific. At least four isoforms of SOGA1 are known to exist.
Isotype	IgG
Form	Liquid
Concentration	1 mg/mL
Purification	SOGA1 Antibody is affinity chromatography purified via peptide column.
Suggested Dilutions	SOGA1 antibody can be used for detection of SOGA1 by Western blot at 1 - 2 ug/ml.

Antibody validated: Western Blot in human samples and Immunofluorescence in human samples. All other applications and species not yet tested. Optimal dilutions for each application should be determined by the researcher.

Anti-Protein SOGA1 SOGA1 Antibody (A13046) Images



Western blot analysis of SOGA1 in HeLa cell lysate with SOGA1 antibody at (A) 1 and (B) 2 ug/ml.



Immunofluorescence of SOGA1 in HeLa cells with SOGA1 antibody at 5 ug/mL.

Submit a product review to [Biocompare.com](https://www.biocompare.com)

Submit a review of this product to [Biocompare.com](https://www.biocompare.com) to receive a \$20 Amazon.com giftcard! Your reviews help your fellow scientists make the right decisions. Thank you for your contribution.



Anti-Protein SOGA1 SOGA1 Antibody

For Research Use Only. Not for use in diagnostic procedures.