

Anti-RBM11 Antibody Picoband®

Catalog Number: A13050-1

About RBM11

Putative RNA-binding protein 11 is a protein that in humans is encoded by the RBM11 gene. Enables poly(U) RNA binding activity and protein homodimerization activity. Acts upstream of or within cellular response to oxidative stress and regulation of alternative mRNA splicing, via spliceosome. Located in nuclear speck.

Overview

Product Name	Anti-RBM11 Antibody Picoband®
Reactive Species	Human
Description	Boster Bio Anti-RBM11 Antibody Picoband® catalog # A13050-1. Tested in ELISA, Flow Cytometry, WB applications. This antibody reacts with Human. The brand Picoband indicates this is a premium antibody that guarantees superior quality, high affinity, and strong signals with minimal background in Western blot applications. Only our best-performing antibodies are designated as Picoband, ensuring unmatched performance.
Application	ELISA, Flow Cytometry, WB
Clonality	Polyclonal
Formulation	Each vial contains 4 mg Trehalose, 0.9 mg NaCl, 0.2 mg Na ₂ HPO ₄ .
Storage Instructions	At -20°C for one year from date of receipt. After reconstitution, at 4°C for one month. It can also be aliquotted and stored frozen at -20°C for six months. Avoid repeated freezing and thawing.
Host	Rabbit
Uniprot ID	P57052

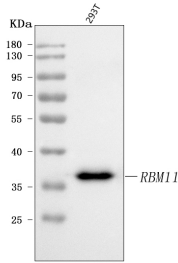
Technical Details

Immunogen	E.coli-derived human RBM11 recombinant protein (Position: M1-K246).
Recommended Detection Systems	Boster recommends Enhanced Chemiluminescent Kit with anti-Rabbit IgG (EK1002) for Western blot.
Cross Reactivity	No cross-reactivity with other proteins
Isotype	Rabbit IgG
Form	Lyophilized
Concentration	Adding 0.2 ml of distilled water will yield a concentration of 500 µg/ml.
Purification	Immunogen affinity purified.

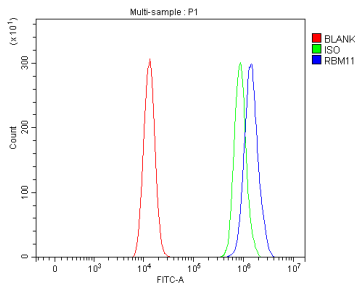
Suggested Dilutions

Western blot, 0.25-0.5 ug/ml, Human
Flow Cytometry (Fixed), 1-3 ug/ 1×10^6 cells, Human
ELISA, 0.1-0.5 ug/ml, -

Anti-RBM11 Antibody Picoband® (A13050-1) Images



Western blot analysis of RBM11 using anti-RBM11 antibody (A13050-1). Electrophoresis was performed on a 5-20% SDS-PAGE gel at 70V (Stacking gel) / 90V (Resolving gel) for 2-3 hours. The sample well of each lane was loaded with 30 ug of sample under reducing conditions. Lane 1: human 293T whole cell lysates. After electrophoresis, proteins were transferred to a nitrocellulose membrane at 150 mA for 50-90 minutes. Blocked the membrane with 5% non-fat milk/TBS for 1.5 hour at RT. The membrane was incubated with rabbit anti-RBM11 antigen affinity purified polyclonal antibody (Catalog # A13050-1) at 0.5 ug/mL overnight at 4°C, then washed with TBS-0.1%Tween 3 times with 5 minutes each and probed with a goat anti-rabbit IgG-HRP secondary antibody at a dilution of 1:5000 for 1.5 hour at RT. The signal is developed using an Enhanced Chemiluminescent detection (ECL) kit (Catalog # EK1002) with Tanon 5200 system. A specific band was detected for RBM11 at approximately 36 kDa. The expected band size for RBM11 is at 32 kDa.



Flow Cytometry analysis of HEL cells using anti-RBM11 antibody (A13050-1). Overlay histogram showing HEL cells stained with A13050-1 (Blue line). To facilitate intracellular staining, cells were fixed with 4% paraformaldehyde and permeabilized with permeabilization buffer. The cells were blocked with 10% normal goat serum. And then incubated with rabbit anti-RBM11 Antibody (A13050-1, 1 ug/1x10⁶ cells) for 30 min at 20°C. DyLight®488 conjugated goat anti-rabbit IgG (BA1127, 5-10 ug/1x10⁶ cells) was used as secondary antibody for 30 minutes at 20°C. Isotype control antibody (Green line) was rabbit IgG (1 ug/1x10⁶) used under the same conditions. Unlabelled sample without incubation with primary antibody and secondary antibody (Red line) was used as a blank control.

Submit a product review to Biocompare.com

Submit a review of this product to Biocompare.com to receive a \$20 Amazon.com giftcard! Your reviews help your fellow scientists make the right decisions. Thank you for your contribution.



Anti-RBM11 Antibody

For Research Use Only. Not for use in diagnostic procedures.