

## Anti-PPAPDC1B PLPP5 Antibody

Catalog Number: A13059

### About PPAPDC1B

Phosphatidate phosphatase (PAP) plays important role in lipid-signaling metabolism in eukaryotic cells. Two distinct types of PAP (PAP1 and PAP2) activity have been distinguished by their subcellular localization and differential sensitivity to N-ethylmaleimide (NEM) and Mg<sup>2+</sup>. A yeast diacylglycerol pyrophosphate (DGPP) phosphatase (DPP1) and mammalian DGPP phosphatase (PAP2) have been identified as Mg<sup>2+</sup>-independent and NEM-insensitive membrane-associated. PPAPDC1A (also known as DPPL2) and PPAPDC1B (DPPL1) form a novel type of Mg<sup>2+</sup>-independent and NEM-sensitive mammalian phosphatidate phosphatase showing broad substrate specificity. Knockdown experiments indicated that this protein is involved with multiple cell signaling pathways, including the JAK-Stat3, MAP kinase, and PKC pathways. PPAPDC1B may also potentiate the estrogen receptor pathway by down-regulating DUSP22.

### Overview

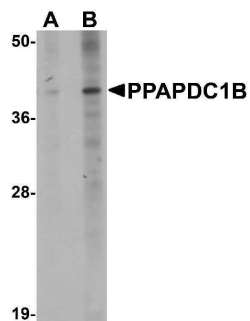
Product Name	Anti-PPAPDC1B PLPP5 Antibody
Reactive Species	Human, Mouse
Description	Boster Bio Anti-PPAPDC1B PLPP5 Antibody (Catalog # A13059). Tested in ELISA, WB applications. This antibody reacts with Human, Mouse.
Application	ELISA, WB
Clonality	Polyclonal
Formulation	PPAPDC1B Antibody is supplied in PBS containing 0.02% sodium azide.
Storage Instructions	PPAPDC1B antibody can be stored at 4°C for three months and -20°C, stable for up to one year. Avoid repeated freeze-thaw cycles. Antibodies should not be exposed to prolonged high temperatures.
Host	Rabbit
Uniprot ID	Q8NEB5

### Technical Details

Immunogen	PPAPDC1B antibody was raised against a 14 amino acid synthetic peptide near the amino terminus of human PPAPDC1B. The immunogen is located within amino acids 30 - 80 of PPAPDC1B.
Predicted Reactive Species	Rat
Isotype	IgG
Form	Liquid
Concentration	1 mg/mL

Purification	PPAPDC1B Antibody is affinity chromatography purified via peptide column.
Suggested Dilutions	PPAPDC1B antibody can be used for detection of PPAPDC1B by Western blot at 1 - 2 ug/mL. Antibody validated: Western Blot in mouse samples. All other applications and species not yet tested. Optimal dilutions for each application should be determined by the researcher.

## Anti-PPAPDC1B PLPP5 Antibody (A13059) Images



Western blot analysis of PPAPDC1B in EL4 cell lysate with PPAPDC1B antibody at (A) 1 and (B) 2 ug/mL.

### Submit a product review to Biocompare.com

Submit a review of this product to Biocompare.com to receive a \$20 Amazon.com giftcard! Your reviews help your fellow scientists make the right decisions. Thank you for your contribution.



Anti-PPAPDC1B PLPP5 Antibody

For Research Use Only. Not for use in diagnostic procedures.