

Anti-CARD6 (A2) Antibody

Catalog Number: A13067

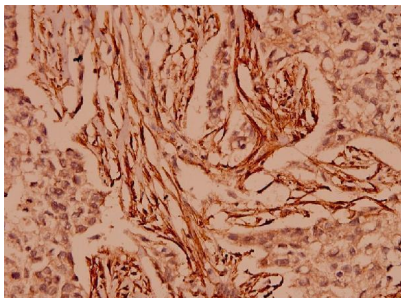
Overview

Product Name	Anti-CARD6 (A2) Antibody
Reactive Species	Human
Description	Boster Bio Anti-CARD6 (A2) Antibody catalog # A13067. Tested in IHC,IF applications. This antibody reacts with Human.
Application	IF, IHC
Clonality	Polyclonal
Formulation	Rabbit IgG, 1mg/ml in PBS with 0.02% sodium azide, 50% glycerol, pH7.2
Storage Instructions	Store at -20°C for one year. For short term storage and frequent use, store at 4°C for up to one month. Avoid repeated freeze-thaw cycles.
Host	Rabbit
Uniprot ID	Q9BX69

Technical Details

Immunogen	Synthetic peptide, corresponding to the N-terminal of Human CARD6.
Isotype	IgG
Form	Liquid
Concentration	1 mg/ml
Purification	The antibody was affinity-purified from rabbit antiserum by affinity-chromatography using epitope-specific immunogen and the purity is > 95% (by SDS-PAGE).
Suggested Dilutions	IHC: 1:50-1:200 IF: 1:50-1:200

Anti-CARD6 (A2) Antibody (A13067) Images



Immunohistochemistry (IHC) analyzes of CARD6 (A2) pAb in paraffin-embedded human breast carcinoma tissue at 1:100.

Submit a product review to [Biocompare.com](https://www.biocompare.com)

Submit a review of this product to [Biocompare.com](https://www.biocompare.com) to receive a \$20 Amazon.com giftcard! Your reviews help your fellow scientists make the right decisions. Thank you for your contribution.



Anti-CARD6 (A2) Antibody

For Research Use Only. Not for use in diagnostic procedures.