

## Anti-LRRTM4 Antibody

Catalog Number: A13110

### About LRRTM4

The Leucine-rich repeat transmembrane neuronal proteins (LRRTMs) are differentially expressed in the nervous system and were recently found to instruct presynaptic and mediate postsynaptic glutamatergic differentiation, with LRRTM1 and LRRTM2 most potent at inducing presynaptic differentiation. Little is known about the function of LRRTM4; in mouse, it is expressed in the limb mesenchyme, neural tube, caudal mesoderm and in three distinct regions of the head. Later expression occurs in a subset of the developing sclerotome. Its similarity to other LRRTM family members suggests that LRRTM4 may also play a role in the development and maintenance of the vertebrate nervous system.

### Overview

Product Name	Anti-LRRTM4 Antibody
Reactive Species	Human
Description	Boster Bio Anti-LRRTM4 Antibody (Catalog # A13110). Tested in ELISA, WB, IHC-P, IF applications. This antibody reacts with Human.
Application	ELISA, IF, IHC-P, WB
Clonality	Polyclonal
Formulation	LRRTM4 Antibody is supplied in PBS containing 0.02% sodium azide.
Storage Instructions	LRRTM4 antibody can be stored at 4°C for three months and -20°C, stable for up to one year. Avoid repeated freeze-thaw cycles. Antibodies should not be exposed to prolonged high temperatures.
Host	Rabbit
Uniprot ID	Q86VH4

### Technical Details

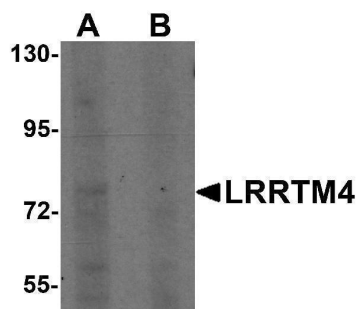
Immunogen	LRRTM4 antibody was raised against a 16 amino acid synthetic peptide near the center of human LRRTM4. The immunogen is located within amino acids 350 - 400 of LRRTM4.
Predicted Reactive Species	Mouse, Rat
Cross Reactivity	At least two isoforms of LRRTM4 are known to exist; this antibody will both isoforms. LRRTM4 antibody is predicted to not cross-react with other LRRTM family members.
Isotype	IgG
Form	Liquid
Concentration	1 mg/mL
Purification	LRRTM4 Antibody is affinity chromatography purified via peptide column.

Suggested Dilutions

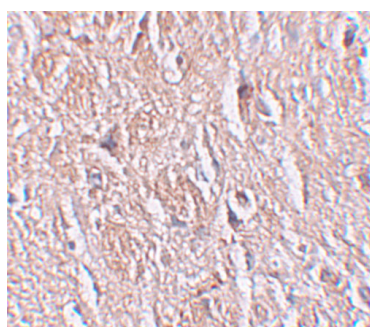
LRRTM4 antibody can be used for detection of LRRTM4 by Western blot at 1 ug/mL. Antibody can also be used for immunohistochemistry starting at 2.5 ug/mL. For immunofluorescence start at 20 ug/mL.

Antibody validated: Western Blot in human samples; Immunohistochemistry in human samples and Immunofluorescence in human samples. All other applications and species not yet tested. Optimal dilutions for each application should be determined by the researcher.

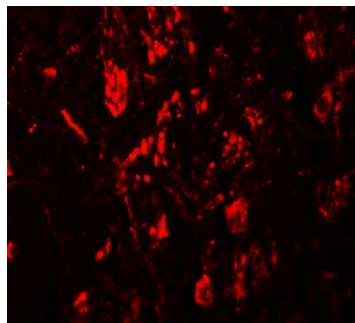
## Anti-LRRTM4 Antibody (A13110) Images



Western blot analysis of LRRTM4 in HeLa cell lysate with LRRTM4 antibody at 1 ug/mL in (A) the absence and (B) the presence of blocking peptide.



Immunohistochemistry of LRRTM4 in human brain tissue with LRRTM4 antibody at 2.5 ug/mL.



Immunofluorescence of LRRTM4 in human brain tissue with LRRTM4 antibody at 20 ug/mL.

### Submit a product review to [Biocompare.com](https://www.biocompare.com)

Submit a review of this product to [Biocompare.com](https://www.biocompare.com) to receive a \$20 Amazon.com giftcard! Your reviews help your fellow scientists make the right decisions. Thank you for your contribution.



Anti-LRRTM4 Antibody

For Research Use Only. Not for use in diagnostic procedures.